



ZUFSP rabbit pAb

Catalog No	BYab-08454
Isotype	IgG
Reactivity	Human; Mouse;Rat
Applications	WB
Gene Name	ZUFSP C6orf113
Protein Name	ZUFSP
Immunogen	Synthesized peptide derived from human ZUFSP AA range: 89-139
Specificity	This antibody detects endogenous levels of ZUFSP at Human/Mouse/Rat
Formulation	Liquid in PBS containing 50% glycerol, 0.5% BSA and 0.02% sodium azide.
Source	Polyclonal, Rabbit,IgG
Purification	The antibody was affinity-purified from rabbit serum by affinity-chromatography using specific immunogen.
Dilution	WB 1: 500-2000
Concentration	1 mg/ml
Purity	≥90%
Storage Stability	-20°C/1 year
Synonyms	
Observed Band	
Cell Pathway	Cytoplasm . Nucleus . Mostly present in the nuclear fraction. Localizes to DNA lesions. .
Tissue Specificity	
Function	caution:Although related to the Ufm1-specific proteases, it lacks the conserved His active site, suggesting that it is probably inactive.,similarity:Contains 3 C2H2-type zinc fingers.,
Background	
matters needing attention	Avoid repeated freezing and thawing!

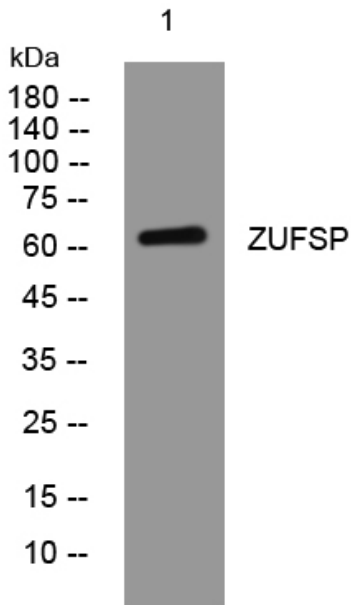
Nanjing BYabscience technology Co.,Ltd



Usage suggestions

This product can be used in immunological reaction related experiments. For more information, please consult technical personnel.

Products Images



Western blot analysis of lysates from HuvEc cells, primary antibody was diluted at 1:1000, 4° over night