



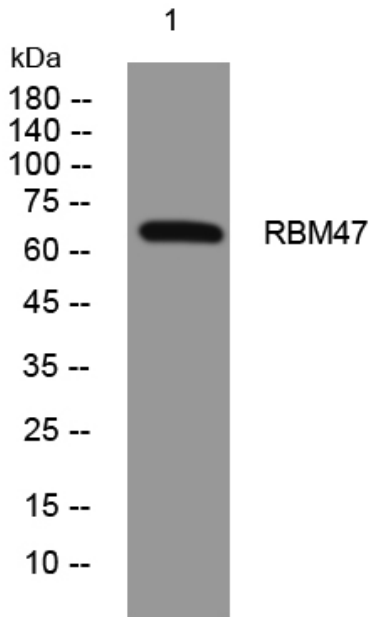
RBM47 rabbit pAb

Catalog No	BYab-08453
Isotype	IgG
Reactivity	Human; Mouse;Rat
Applications	WB
Gene Name	RBM47
Protein Name	RBM47
Immunogen	Synthesized peptide derived from human RBM47 AA range: 445-495
Specificity	This antibody detects endogenous levels of RBM47 at Human/Mouse/Rat
Formulation	Liquid in PBS containing 50% glycerol, 0.5% BSA and 0.02% sodium azide.
Source	Polyclonal, Rabbit,IgG
Purification	The antibody was affinity-purified from rabbit serum by affinity-chromatography using specific immunogen.
Dilution	WB 1: 500-2000
Concentration	1 mg/ml
Purity	≥90%
Storage Stability	-20°C/1 year
Synonyms	
Observed Band	
Cell Pathway	Nucleus .
Tissue Specificity	
Function	similarity:Belongs to the RRM RBM47 family.,similarity:Contains 3 RRM (RNA recognition motif) domains.,
Background	
matters needing attention	Avoid repeated freezing and thawing!
Usage suggestions	This product can be used in immunological reaction related experiments. For more information, please consult technical personnel.

Nanjing BYabscience technology Co.,Ltd



Products Images



Western blot analysis of lysates from Jarkat cells,
primary antibody was diluted at 1:1000, 4° over night