



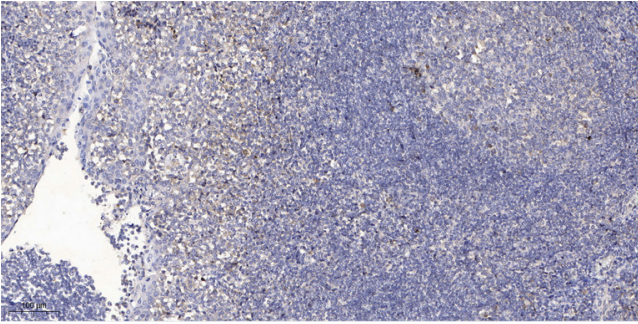
# COX16 rabbit pAb

<b>Catalog No</b>	BYab-08452
<b>Isotype</b>	IgG
<b>Reactivity</b>	Human; Mouse
<b>Applications</b>	IHC;IF
<b>Gene Name</b>	COX16 C14orf112 HSPC203 PTD019
<b>Protein Name</b>	COX16
<b>Immunogen</b>	Synthesized peptide derived from human COX16 AA range: 9-59
<b>Specificity</b>	This antibody detects endogenous levels of COX16 at Human/Mouse
<b>Formulation</b>	Liquid in PBS containing 50% glycerol, 0.5% BSA and 0.02% sodium azide.
<b>Source</b>	Polyclonal, Rabbit,IgG
<b>Purification</b>	The antibody was affinity-purified from rabbit serum by affinity-chromatography using specific immunogen.
<b>Dilution</b>	IHC-p 1: 50-200. IF 1:50-200
<b>Concentration</b>	1 mg/ml
<b>Purity</b>	≥90%
<b>Storage Stability</b>	-20°C/1 year
<b>Synonyms</b>	
<b>Observed Band</b>	
<b>Cell Pathway</b>	Mitochondrion inner membrane ; Single-pass membrane protein .
<b>Tissue Specificity</b>	Widely expressed. Expressed at higher level in skeletal muscle, heart and liver.
<b>Function</b>	miscellaneous:No COX16 mutations have been detected in patients with cytochrome c oxidase (COX) deficiency.,similarity:Belongs to the COX16 family.,
<b>Background</b>	
<b>matters needing attention</b>	Avoid repeated freezing and thawing!
<b>Usage suggestions</b>	This product can be used in immunological reaction related experiments. For more information, please consult technical personnel.

Nanjing BYabscience technology Co.,Ltd



## Products Images



Immunohistochemical analysis of paraffin-embedded human tonsil. 1, Antibody was diluted at 1:200(4° overnight). 2, Tris-EDTA,pH9.0 was used for antigen retrieval. 3,Secondary antibody was diluted at 1:200(room temperature, 30min).