



TXLNG rabbit pAb

Catalog No	BYab-08450
Isotype	IgG
Reactivity	Human; Mouse
Applications	WB
Gene Name	TXLNG CXorf15 ELRG LSR5
Protein Name	TXLNG
Immunogen	Synthesized peptide derived from human TXLNG AA range: 219-269
Specificity	This antibody detects endogenous levels of TXLNG at Human/Mouse
Formulation	Liquid in PBS containing 50% glycerol, 0.5% BSA and 0.02% sodium azide.
Source	Polyclonal, Rabbit,IgG
Purification	The antibody was affinity-purified from rabbit serum by affinity-chromatography using specific immunogen.
Dilution	WB 1: 500-2000
Concentration	1 mg/ml
Purity	≥90%
Storage Stability	-20°C/1 year
Synonyms	
Observed Band	
Cell Pathway	Nucleus membrane . Cytoplasm, cytosol .
Tissue Specificity	Ubiquitously expressed. Expressed at high level in heart and skeletal muscle. Expressed in brain, placenta, lung, liver, kidney and pancreas.
Function	function:May be involved in intracellular vesicle traffic.,similarity:Belongs to the taxilin family.,subunit:Binds to the C-terminal coiled coil region of syntaxin family members STX1A, STX3A and STX4A.,tissue specificity:Ubiquitously expressed. Expressed at high level in heart and skeletal muscle. Expressed in brain, placenta, lung, liver, kidney and pancreas.,
Background	This gene encodes a member of the taxilin family. The encoded protein binds to the C-terminal coiled-coil region of syntaxin family members 1A, 3A and 4A, and may play a role in intracellular vesicle trafficking. This gene is up-regulated by lipopolysaccharide and the gene product may be involved in cell cycle regulation. The related mouse protein was also shown to inhibit activating transcription factor 4-mediated transcription and thus regulate bone mass accrual. Alternatively

Nanjing BYabscience technology Co.,Ltd



spliced transcript variants encoding different isoforms have been found for this gene. [provided by RefSeq, Dec 2009],

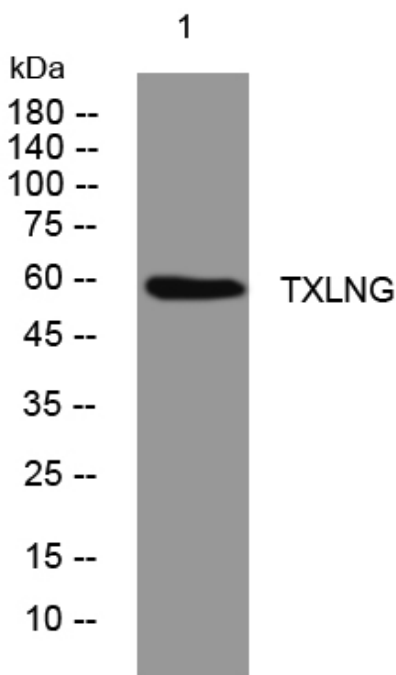
matters needing attention

Avoid repeated freezing and thawing!

Usage suggestions

This product can be used in immunological reaction related experiments. For more information, please consult technical personnel.

Products Images



Western blot analysis of lysates from PC-12 cells, primary antibody was diluted at 1:1000, 4° over night