



ESX1 rabbit pAb

Catalog No	BYab-08449
Isotype	IgG
Reactivity	Human;Rat;Mouse;
Applications	WB
Gene Name	ESX1 ESX1L ESX1R
Protein Name	ESX1
Immunogen	Synthesized peptide derived from human ESX1 AA range: 327-377
Specificity	This antibody detects endogenous levels of ESX1 at Human
Formulation	Liquid in PBS containing 50% glycerol, 0.5% BSA and 0.02% sodium azide.
Source	Polyclonal, Rabbit,IgG
Purification	The antibody was affinity-purified from rabbit serum by affinity-chromatography using specific immunogen.
Dilution	WB 1: 500-2000
Concentration	1 mg/ml
Purity	≥90%
Storage Stability	-20°C/1 year
Synonyms	
Observed Band	
Cell Pathway	Cytoplasm . Nucleus . ESXR1-N localizes specifically to the nucleus while ESXR1-C localizes specifically to the cytoplasm.
Tissue Specificity	Expressed in placenta and testis. Expressed in testicular germ cell tumors.
Function	similarity:Contains 1 homeobox DNA-binding domain.,tissue specificity:Expressed in placenta and testis.,
Background	This gene encodes a dual-function 65 kDa protein that undergoes proteolytic cleavage to produce a 45 kDa N-terminal fragment with a paired-like homeodomain and a 20 kDa C-terminal fragment with a proline-rich domain. The C-terminal fragment localizes to the cytoplasm while the N-terminal fragment localizes exclusively to the nucleus. In contrast to human, the mouse homolog has a novel PN/PF motif in the C-terminus and is paternally imprinted in placental tissue. This gene likely plays a role in placental development and spermatogenesis. [provided by RefSeq, Jan 2010],

Nanjing BYabscience technology Co.,Ltd



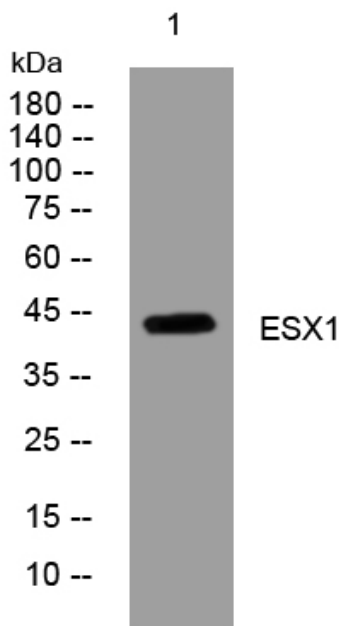
matters needing attention

Avoid repeated freezing and thawing!

Usage suggestions

This product can be used in immunological reaction related experiments. For more information, please consult technical personnel.

Products Images



Western blot analysis of lysates from U2OS cells, primary antibody was diluted at 1:1000, 4° over night