



LIPA4 rabbit pAb

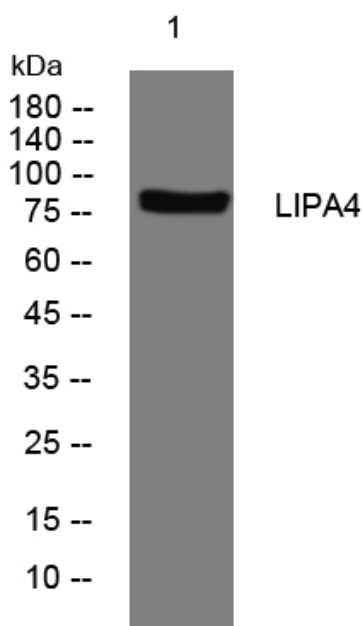
Catalog No	BYab-08447
Isotype	IgG
Reactivity	Human;Rat
Applications	WB
Gene Name	PPFIA4 KIAA0897
Protein Name	LIPA4
Immunogen	Synthesized peptide derived from human LIPA4 AA range: 513-563
Specificity	This antibody detects endogenous levels of LIPA4 at Human/Rat
Formulation	Liquid in PBS containing 50% glycerol, 0.5% BSA and 0.02% sodium azide.
Source	Polyclonal, Rabbit,IgG
Purification	The antibody was affinity-purified from rabbit serum by affinity-chromatography using specific immunogen.
Dilution	WB 1: 500-2000
Concentration	1 mg/ml
Purity	≥90%
Storage Stability	-20°C/1 year
Synonyms	
Observed Band	
Cell Pathway	Cytoplasm . Cell surface . Colocalizes with PTPRF at the cell surface. .
Tissue Specificity	Expressed only in the heart, brain, and skeletal muscle.
Function	domain:The N-terminal coiled coil regions mediate homodimerization preferentially and heterodimerization type alpha/alpha. The C-terminal, non-coiled coil regions mediate heterodimerization type alpha/beta and interaction with PTPRD, PTPRF and PTPRS.,function:May regulate the disassembly of focal adhesions. May localize receptor-like tyrosine phosphatases type 2A at specific sites on the plasma membrane, possibly regulating their interaction with the extracellular environment and their association with substrates.,similarity:Belongs to the liprin family. Liprin-alpha subfamily.,subcellular location:Colocalizes with PTPRF at the cell surface.,subunit:Forms homodimers and heterodimers with liprins-alpha and liprins-beta. Interacts with the second PTPase domain of PTPRD, PTPRF and PTPRS. Binds RIMS1, RIMS2, GIT1, KIF1A and GRIP1.,tiss

Nanjing BYabscience technology Co.,Ltd



Background	PPFIA4, or liprin-alpha-4, belongs to the liprin-alpha gene family. See liprin-alpha-1 (LIP1, or PPFIA1; MIM 611054) for background on liprins.[supplied by OMIM, Mar 2008],
matters needing attention	Avoid repeated freezing and thawing!
Usage suggestions	This product can be used in immunological reaction related experiments. For more information, please consult technical personnel.

Products Images



Western blot analysis of lysates from HeLa cells, primary antibody was diluted at 1:1000, 4° over night