



KRA14 rabbit pAb

Catalog No	BYab-08443
Isotype	IgG
Reactivity	Human; Mouse
Applications	WB
Gene Name	KRTAP1-4 KAP1.4 KRTAP1.4
Protein Name	KRA14
Immunogen	Synthesized peptide derived from human KRA14 AA range: 5-55
Specificity	This antibody detects endogenous levels of KRA14 at Human/Mouse
Formulation	Liquid in PBS containing 50% glycerol, 0.5% BSA and 0.02% sodium azide.
Source	Polyclonal, Rabbit,IgG
Purification	The antibody was affinity-purified from rabbit serum by affinity-chromatography using specific immunogen.
Dilution	WB 1: 500-2000
Concentration	1 mg/ml
Purity	≥90%
Storage Stability	-20°C/1 year
Synonyms	
Observed Band	
Cell Pathway	keratin filament,
Tissue Specificity	Expressed in the middle/upper portions of the hair cortex, in the region termed the keratogenous zone.
Function	function:In the hair cortex, hair keratin intermediate filaments are embedded in an interfilamentous matrix, consisting of hair keratin-associated proteins (KRTAP), which are essential for the formation of a rigid and resistant hair shaft through their extensive disulfide bond cross-linking with abundant cysteine residues of hair keratins. The matrix proteins include the high-sulfur and high-glycine-tyrosine keratins.,similarity:Belongs to the KRTAP type 1 family.,subunit:Interacts with hair keratins.,tissue specificity:Expressed in the middle/upper portions of the hair cortex, in the region termed the keratogenous zone.,
Background	The main structural proteins of mammalian hair fiber are the hair keratins (see MIM 601077) and the keratin-associated proteins (KAPs), which form a rigid and resistant hair shaft through extensive disulfide bond crosslinking with the

Nanjing BYabscience technology Co.,Ltd



abundant cysteines of hair keratins (Shimomura et al., 2002 [PubMed 12228244]).[supplied by OMIM, Jan 2009],

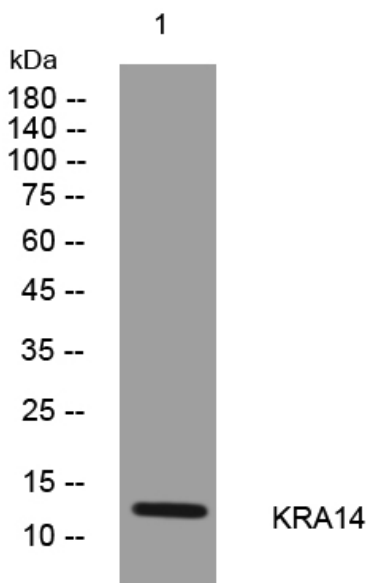
matters needing attention

Avoid repeated freezing and thawing!

Usage suggestions

This product can be used in immunological reaction related experiments. For more information, please consult technical personnel.

Products Images



Western blot analysis of lysates from DU145 cells, primary antibody was diluted at 1:1000, 4° over night