



C42S2 rabbit pAb

Catalog No	BYab-08440
Isotype	IgG
Reactivity	Human; Mouse;Rat
Applications	IHC;IF
Gene Name	CDC42SE2 SPEC2
Protein Name	C42S2
Immunogen	Synthesized peptide derived from human C42S2 AA range: 3-53
Specificity	This antibody detects endogenous levels of C42S2 at Human/Mouse/Rat
Formulation	Liquid in PBS containing 50% glycerol, 0.5% BSA and 0.02% sodium azide.
Source	Polyclonal, Rabbit,IgG
Purification	The antibody was affinity-purified from rabbit serum by affinity-chromatography using specific immunogen.
Dilution	IHC-p 1: 50-200. IF 1:50-200
Concentration	1 mg/ml
Purity	≥90%
Storage Stability	-20°C/1 year
Synonyms	
Observed Band	
Cell Pathway	Cytoplasm, cytoskeleton. Cell membrane; Lipid-anchor. Cell projection, phagocytic cup. Recruited to the activated TCR prior actin polymerization. Localizes at the phagocytic cup of macrophages.
Tissue Specificity	Widely expressed. Expressed at higher level in T-lymphocytes. Highly expressed in CCRF-CEM T-lymphocytes, Jurkat T-lymphocytes, and Raji B-lymphocytes compared (at protein level).
Function	domain:The CRIB domain mediates interaction with CDC42.,function:Probably involved in the organization of the actin cytoskeleton by acting downstream of CDC42, inducing actin filament assembly. Alters CDC42-induced cell shape changes. In activated T-cells, may play a role in CDC42-mediated F-actin accumulation at the immunological synapse. May play a role in early contractile events in phagocytosis in macrophages.,miscellaneous:CDC42SE2 is mapped in the genomic region associated with schizophrenia.,similarity:Belongs to the CDC42SE/SPEC family.,similarity:Contains 1 CRIB domain.,subcellular location:Recruited to the activated TCR prior actin polymerization. Localizes at the

Nanjing BYabscience technology Co.,Ltd



phagocytic cup of macrophages.,subunit:Interacts with CDC42 (in GTP-bound form). Interacts weakly with RAC1 and not at all with RHOA.,tissue specificity:Widely expressed. Expressed at higher level in T lymphocytes. Hi

Background

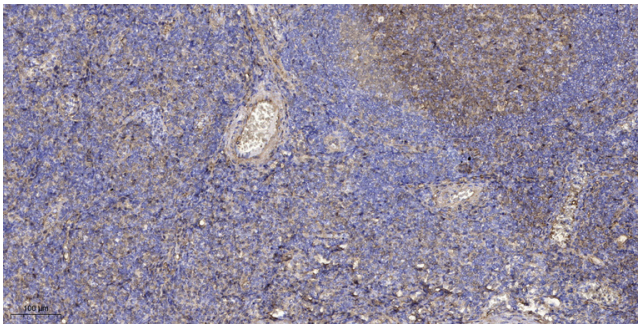
matters needing attention

Avoid repeated freezing and thawing!

Usage suggestions

This product can be used in immunological reaction related experiments. For more information, please consult technical personnel.

Products Images



Immunohistochemical analysis of paraffin-embedded human tonsil. 1, Antibody was diluted at 1:200(4° overnight). 2, Tris-EDTA,pH9.0 was used for antigen retrieval. 3,Secondary antibody was diluted at 1:200(room temperature, 30min).