



# UPP2 rabbit pAb

<b>Catalog No</b>	BYab-08436
<b>Isotype</b>	IgG
<b>Reactivity</b>	Human; Mouse
<b>Applications</b>	WB
<b>Gene Name</b>	UPP2
<b>Protein Name</b>	UPP2
<b>Immunogen</b>	Synthesized peptide derived from human UPP2 AA range: 164-214
<b>Specificity</b>	This antibody detects endogenous levels of UPP2 at Human/Mouse
<b>Formulation</b>	Liquid in PBS containing 50% glycerol, 0.5% BSA and 0.02% sodium azide.
<b>Source</b>	Polyclonal, Rabbit,IgG
<b>Purification</b>	The antibody was affinity-purified from rabbit serum by affinity-chromatography using specific immunogen.
<b>Dilution</b>	WB 1: 500-2000
<b>Concentration</b>	1 mg/ml
<b>Purity</b>	≥90%
<b>Storage Stability</b>	-20°C/1 year
<b>Synonyms</b>	
<b>Observed Band</b>	
<b>Cell Pathway</b>	cytoplasm,cytosol,type III intermediate filament,
<b>Tissue Specificity</b>	Predominantly expressed in kidney.
<b>Function</b>	catalytic activity:Uridine + phosphate = uracil + alpha-D-ribose 1-phosphate.,function:Catalyzes the reversible phosphorylytic cleavage of uridine and deoxyuridine to uracil and ribose- or deoxyribose-1-phosphate. The produced molecules are then utilized as carbon and energy sources or in the rescue of pyrimidine bases for nucleotide synthesis. Shows substrate specificity and accept uridine, deoxyuridine, and thymidine as well as the two pyrimidine nucleoside analogs 5-fluorouridine and 5-fluoro-2(')-deoxyuridine as substrates.,pathway:Pyrimidine metabolism; UMP biosynthesis via salvage pathway; uracil from uridine (phosphorylase route): step 1/1.,similarity:Belongs to the PNP/UDP phosphorylase family.,tissue specificity:Predominantly expressed in kidney.,

Nanjing BYabscience technology Co.,Ltd



## Background

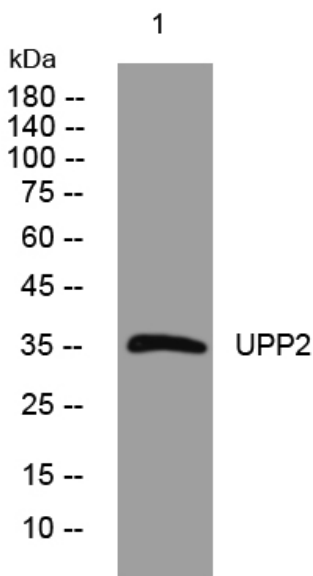
### matters needing attention

Avoid repeated freezing and thawing!

### Usage suggestions

This product can be used in immunological reaction related experiments. For more information, please consult technical personnel.

## Products Images



Western blot analysis of lysates from VEC cells, primary antibody was diluted at 1:1000, 4° over night