



# RMI2 rabbit pAb

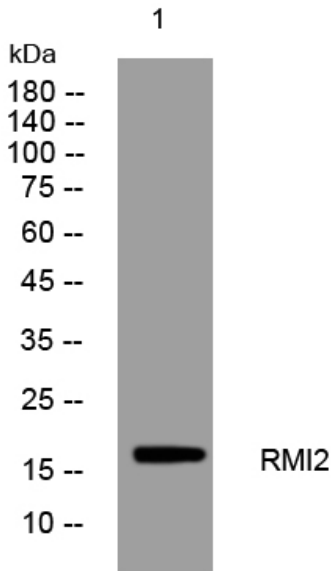
<b>Catalog No</b>	BYab-08427
<b>Isotype</b>	IgG
<b>Reactivity</b>	Human; Mouse
<b>Applications</b>	WB
<b>Gene Name</b>	RMI2 C16orf75
<b>Protein Name</b>	RMI2
<b>Immunogen</b>	Synthesized peptide derived from human RMI2 AA range: 73-123
<b>Specificity</b>	This antibody detects endogenous levels of RMI2 at Human/Mouse
<b>Formulation</b>	Liquid in PBS containing 50% glycerol, 0.5% BSA and 0.02% sodium azide.
<b>Source</b>	Polyclonal, Rabbit,IgG
<b>Purification</b>	The antibody was affinity-purified from rabbit serum by affinity-chromatography using specific immunogen.
<b>Dilution</b>	WB 1: 500-2000
<b>Concentration</b>	1 mg/ml
<b>Purity</b>	≥90%
<b>Storage Stability</b>	-20°C/1 year
<b>Synonyms</b>	
<b>Observed Band</b>	
<b>Cell Pathway</b>	Nucleus . Colocalizes with BLM at nuclear DNA repair foci.
<b>Tissue Specificity</b>	
<b>Function</b>	function:Essential component of the RMI complex, a complex that plays an important role in the processing of homologous recombination intermediates to limit DNA crossover formation in cells. The complex is therefore essential for the stability, localization, and function of complexes containing BLM. In the RMI complex, it is required to target BLM to chromatin and stress-induced nuclear foci and mitotic phosphorylation of BLM.,PTM:Phosphorylated during mitosis.,similarity:Belongs to the RMI2 family.,similarity:Contains 1 OB DNA-binding domain.,subcellular location:Colocalizes with BLM at nuclear DNA repair foci.,subunit:Component of the RMI complex, containing at least TOP3A, RMI1 and RMI2. The RMI complex interacts with BLM.,

Nanjing BYabscience technology Co.,Ltd



<b>Background</b>	RM12 is a component of the BLM (RECQL3; MIM 604610) complex, which plays a role in homologous recombination-dependent DNA repair and is essential for genome stability (Xu et al., 2008 [PubMed 18923082]).[supplied by OMIM, Nov 2008],
<b>matters needing attention</b>	Avoid repeated freezing and thawing!
<b>Usage suggestions</b>	This product can be used in immunological reaction related experiments. For more information, please consult technical personnel.

## Products Images



Western blot analysis of lysates from HeLa cells, primary antibody was diluted at 1:1000, 4° over night