



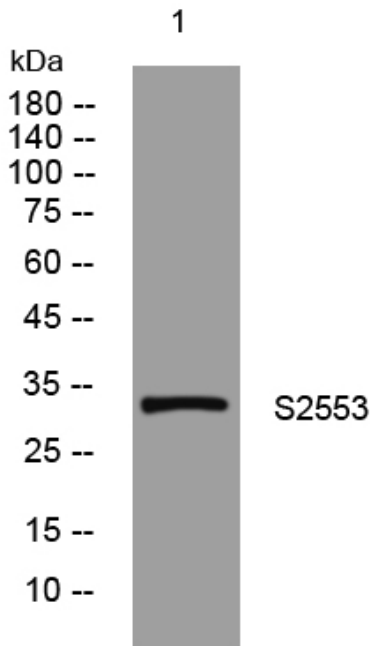
S2553 rabbit pAb

Catalog No	BYab-08422
Isotype	IgG
Reactivity	Human;Rat;Mouse;
Applications	WB
Gene Name	SLC25A53 MCART6
Protein Name	S2553
Immunogen	Synthesized peptide derived from human S2553 AA range: 131-181
Specificity	This antibody detects endogenous levels of S2553 at Human
Formulation	Liquid in PBS containing 50% glycerol, 0.5% BSA and 0.02% sodium azide.
Source	Polyclonal, Rabbit,IgG
Purification	The antibody was affinity-purified from rabbit serum by affinity-chromatography using specific immunogen.
Dilution	WB 1: 500-2000
Concentration	1 mg/ml
Purity	≥90%
Storage Stability	-20°C/1 year
Synonyms	
Observed Band	
Cell Pathway	Mitochondrion inner membrane ; Multi-pass membrane protein .
Tissue Specificity	
Function	similarity:Belongs to the mitochondrial carrier family.,similarity:Contains 3 Solcar repeats.,
Background	
matters needing attention	Avoid repeated freezing and thawing!
Usage suggestions	This product can be used in immunological reaction related experiments. For more information, please consult technical personnel.

Nanjing BYabscience technology Co.,Ltd



Products Images



Western blot analysis of lysates from 293T cells,
primary antibody was diluted at 1:1000, 4° over night