



# RSMB rabbit pAb

|                           |   |
|---------------------------|---|
| <b>Catalog No</b>         | BYab-08416  |
| <b>Isotype</b>            | IgG   |
| <b>Reactivity</b>         | Human; Mouse;Rat  |
| <b>Applications</b>       | WB  |
| <b>Gene Name</b>          | SNRPB COD SNRPB1  |
| <b>Protein Name</b>       | RSMB  |
| <b>Immunogen</b>          | Synthesized peptide derived from human RSMB AA range: 42-92   |
| <b>Specificity</b>        | This antibody detects endogenous levels of RSMB at Human/Mouse/Rat  |
| <b>Formulation</b>        | Liquid in PBS containing 50% glycerol, 0.5% BSA and 0.02% sodium azide.   |
| <b>Source</b>             | Polyclonal, Rabbit,IgG  |
| <b>Purification</b>       | The antibody was affinity-purified from rabbit serum by affinity-chromatography using specific immunogen.   |
| <b>Dilution</b>           | WB 1: 500-2000  |
| <b>Concentration</b>      | 1 mg/ml   |
| <b>Purity</b>             | ≥90%  |
| <b>Storage Stability</b>  | -20°C/1 year  |
| <b>Synonyms</b>           |   |
| <b>Observed Band</b>      |   |
| <b>Cell Pathway</b>       | Cytoplasm, cytosol . Nucleus . SMN-mediated assembly into core snRNPs occurs in the cytosol before SMN-mediated transport to the nucleus to be included in spliceosomes. .  |
| <b>Tissue Specificity</b> |   |
| <b>Function</b>           | disease:Patients with the autoimmune disease systemic lupus erythematosus (SLE) have autoantibodies directed against some of the individual snRNP polypeptides. The most common autoantigen is called Sm. B/b' bear Sm epitopes.,function:Associated with snRNP U1, U2, U4/U6 and U5. May have a functional role in the pre-mRNA splicing or in snRNP structure.,PTM:Arg-108 and Arg-112 are dimethylated, probably to asymmetric dimethylarginine.,similarity:Belongs to the snRNP SmB/SmN family.,subunit:Identified in the spliceosome C complex, at least composed of AQR, ASCC3L1, C19orf29, CDC40, CDC5L, CRNKL1, DDX23, DDX41, DDX48, DDX5, DGCR14, DHX35, DHX38, DHX8, EFTUD2, FRG1, GPATC1, HNRPA1, HNRPA2B1, HNRPA3, HNRPC, HNRPF, HNRPH1, HNRPK, HNRPM, HNRPR, |

Nanjing BYabscience technology Co.,Ltd



HNRPU, KIAA1160, KIAA1604, LSM2, LSM3, MAGOH, MORG1, PABPC1, PLRG1, PNN, PPIE, PPIL1, PPIL3, PPWD1, PRPF19, PRPF4B, PRPF6, PRPF8, RALY, RBM22, RBM8A, RBMX

**Background**

The protein encoded by this gene is one of several nuclear proteins that are found in common among U1, U2, U4/U6, and U5 small ribonucleoprotein particles (snRNPs). These snRNPs are involved in pre-mRNA splicing, and the encoded protein may also play a role in pre-mRNA splicing or snRNP structure. Autoantibodies from patients with systemic lupus erythematosus frequently recognize epitopes on the encoded protein. Two transcript variants encoding different isoforms (B and B') have been found for this gene. [provided by RefSeq, Jul 2008],

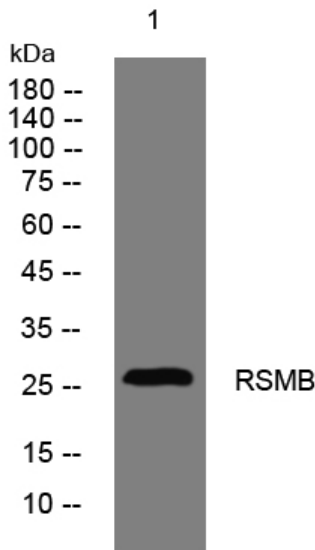
**matters needing attention**

Avoid repeated freezing and thawing!

**Usage suggestions**

This product can be used in immunological reaction related experiments. For more information, please consult technical personnel.

**Products Images**



Nanjing BYabscience technology Co.,Ltd