



YN3563

## ZNF16 rabbit pAb

|                           |   |
|---------------------------|---|
| <b>Catalog No</b>         | BYab-08406  |
| <b>Isotype</b>            | IgG   |
| <b>Reactivity</b>         | Human;Rat;Mouse;  |
| <b>Applications</b>       | WB  |
| <b>Gene Name</b>          | ZNF16 KOX9  |
| <b>Protein Name</b>       | ZNF16   |
| <b>Immunogen</b>          | Synthesized peptide derived from human ZNF16 AA range: 187-237  |
| <b>Specificity</b>        | This antibody detects endogenous levels of ZNF16 at Human   |
| <b>Formulation</b>        | Liquid in PBS containing 50% glycerol, 0.5% BSA and 0.02% sodium azide.   |
| <b>Source</b>             | Polyclonal, Rabbit,IgG  |
| <b>Purification</b>       | The antibody was affinity-purified from rabbit serum by affinity-chromatography using specific immunogen.   |
| <b>Dilution</b>           | WB 1: 500-2000  |
| <b>Concentration</b>      | 1 mg/ml   |
| <b>Purity</b>             | ≥90%  |
| <b>Storage Stability</b>  | -20°C/1 year  |
| <b>Synonyms</b>           |   |
| <b>Observed Band</b>      |   |
| <b>Cell Pathway</b>       | Nucleus .   |
| <b>Tissue Specificity</b> | Ubiquitous.   |
| <b>Function</b>           | function:May be involved in transcriptional regulation.,similarity:Belongs to the krueppel C2H2-type zinc-finger protein family.,similarity:Contains 17 C2H2-type zinc fingers.,  |
| <b>Background</b>         | The protein encoded by this gene contains multiple tandem zinc finger motifs. The encoded protein is involved in the differentiation of erythroid and megakaryocytic cells. This gene is located in a cluster of related genes on chromosome 8 encoding zinc finger proteins. Alternative splicing results in multiple transcript |

Nanjing BYabscience technology Co.,Ltd



variants. [provided by RefSeq, Sep 2012],

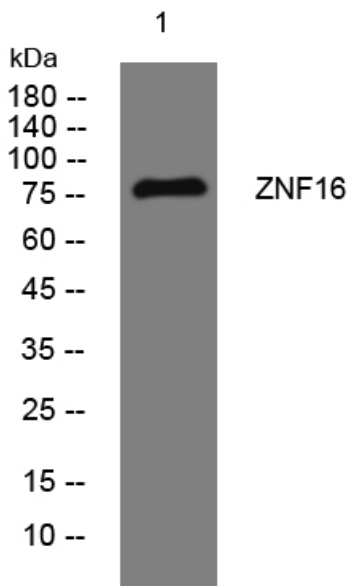
**matters needing attention**

Avoid repeated freezing and thawing!

**Usage suggestions**

This product can be used in immunological reaction related experiments. For more information, please consult technical personnel.

## Products Images



Western blot analysis of lysates from HpeG2 cells, primary antibody was diluted at 1:1000, 4° over night