



# MET22 rabbit pAb

<b>Catalog No</b>	BYab-08403
<b>Isotype</b>	IgG
<b>Reactivity</b>	Human; Mouse
<b>Applications</b>	WB
<b>Gene Name</b>	METTL22 C16orf68 LP8272
<b>Protein Name</b>	MET22
<b>Immunogen</b>	Synthesized peptide derived from human MET22 AA range: 60-110
<b>Specificity</b>	This antibody detects endogenous levels of MET22 at Human/Mouse
<b>Formulation</b>	Liquid in PBS containing 50% glycerol, 0.5% BSA and 0.02% sodium azide.
<b>Source</b>	Polyclonal, Rabbit,IgG
<b>Purification</b>	The antibody was affinity-purified from rabbit serum by affinity-chromatography using specific immunogen.
<b>Dilution</b>	WB 1: 500-2000
<b>Concentration</b>	1 mg/ml
<b>Purity</b>	≥90%
<b>Storage Stability</b>	-20°C/1 year
<b>Synonyms</b>	
<b>Observed Band</b>	
<b>Cell Pathway</b>	Nucleus .
<b>Tissue Specificity</b>	
<b>Function</b>	
<b>Background</b>	This gene encodes a member of the non-histone lysine methyltransferases. It interacts with its substrate, Kin17, which is involved in DNA repair and replication and mRNA processing. Alternative splicing results in multiple transcript variants. [provided by RefSeq, Jan 2016],
<b>matters needing attention</b>	Avoid repeated freezing and thawing!

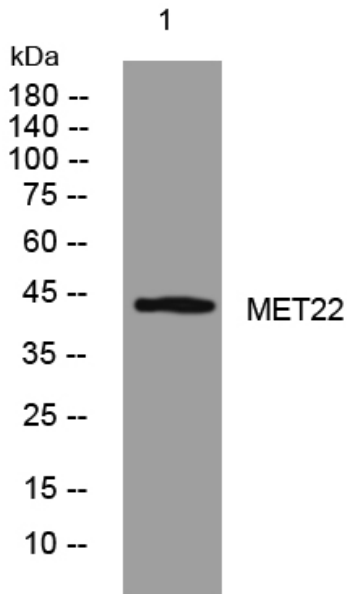
Nanjing BYabscience technology Co.,Ltd



**Usage suggestions**

This product can be used in immunological reaction related experiments. For more information, please consult technical personnel.

**Products Images**



Western blot analysis of lysates from HCT116 cells, primary antibody was diluted at 1:1000, 4° over night