



CITE1 rabbit pAb

Catalog No	BYab-08402
Isotype	IgG
Reactivity	Human; Mouse
Applications	WB
Gene Name	CITED1 MSG1
Protein Name	CITE1
Immunogen	Synthesized peptide derived from human CITE1 AA range: 116-166
Specificity	This antibody detects endogenous levels of CITE1 at Human/Mouse
Formulation	Liquid in PBS containing 50% glycerol, 0.5% BSA and 0.02% sodium azide.
Source	Polyclonal, Rabbit,IgG
Purification	The antibody was affinity-purified from rabbit serum by affinity-chromatography using specific immunogen.
Dilution	WB 1: 500-2000
Concentration	1 mg/ml
Purity	≥90%
Storage Stability	-20°C/1 year
Synonyms	
Observed Band	
Cell Pathway	Nucleus . Cytoplasm . Shuttles between the nucleus and the cytoplasm by a nuclear export signal and (NES) in a CRM1-dependent manner.
Tissue Specificity	Expressed only in melanocytes and testis.
Function	function:Not known, seems to be associated with pigmentation.,similarity:Belongs to the CITED family.,subunit:Binds to RBM14.,tissue specificity:Expressed only in melanocytes and testis.,
Background	This gene encodes a member of the CREB-binding protein/p300-interacting transactivator with Asp/Glu-rich C-terminal domain (CITED) family of proteins. The encoded protein, also known as melanocyte-specific gene 1, may function as a transcriptional coactivator and may play a role in pigmentation of melanocytes. Alternatively spliced transcript variants have been described. [provided by RefSeq, Jan 2009],

Nanjing BYabscience technology Co.,Ltd



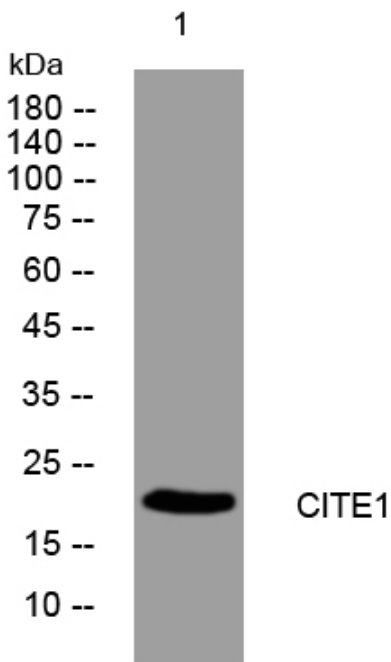
matters needing attention

Avoid repeated freezing and thawing!

Usage suggestions

This product can be used in immunological reaction related experiments. For more information, please consult technical personnel.

Products Images



Western blot analysis of lysates from 293T cells, primary antibody was diluted at 1:1000, 4° over night