



RASL3 rabbit pAb

Catalog No	BYab-08398
Isotype	IgG
Reactivity	Human; Mouse
Applications	WB
Gene Name	RASAL3
Protein Name	RASL3
Immunogen	Synthesized peptide derived from human RASL3 AA range: 297-347
Specificity	This antibody detects endogenous levels of RASL3 at Human/Mouse
Formulation	Liquid in PBS containing 50% glycerol, 0.5% BSA and 0.02% sodium azide.
Source	Polyclonal, Rabbit,IgG
Purification	The antibody was affinity-purified from rabbit serum by affinity-chromatography using specific immunogen.
Dilution	WB 1: 500-2000
Concentration	1 mg/ml
Purity	≥90%
Storage Stability	-20°C/1 year
Synonyms	
Observed Band	
Cell Pathway	Cytoplasm . Cytoplasm, cell cortex .
Tissue Specificity	Predominantly expressed in cells of hematopoietic lineages.
Function	function:May functions as a Ras GTPase-activating protein.,sequence caution:Translated as Arg.,sequence caution:Translation N-terminally shortened.,similarity:Contains 1 C2 domain.,similarity:Contains 1 PH domain.,similarity:Contains 1 Ras-GAP domain.,
Background	
matters needing attention	Avoid repeated freezing and thawing!

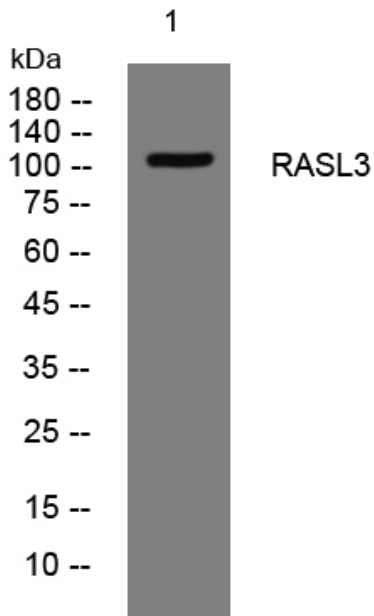
Nanjing BYabscience technology Co.,Ltd



Usage suggestions

This product can be used in immunological reaction related experiments. For more information, please consult technical personnel.

Products Images



Western blot analysis of lysates from MCF-7 cells, primary antibody was diluted at 1:1000, 4° over night