



YN3539

LINES rabbit pAb

Catalog No	BYab-08382
Isotype	IgG
Reactivity	Human; Mouse
Applications	WB
Gene Name	LINS LINS1 WINS1
Protein Name	LINES
Immunogen	Synthesized peptide derived from human LINES AA range: 105-155
Specificity	This antibody detects endogenous levels of LINES at Human/Mouse
Formulation	Liquid in PBS containing 50% glycerol, 0.5% BSA and 0.02% sodium azide.
Source	Polyclonal, Rabbit,IgG
Purification	The antibody was affinity-purified from rabbit serum by affinity-chromatography using specific immunogen.
Dilution	WB 1: 500-2000
Concentration	1 mg/ml
Purity	≥90%
Storage Stability	-20°C/1 year
Synonyms	
Observed Band	
Cell Pathway	
Tissue Specificity	Expressed in adult testis, prostate, prostate, spleen, thymus, skeletal muscle, fetal kidney and brain.
Function	similarity:Belongs to the protein lines family.,tissue specificity:Expressed in adult testis, prostate, prostate, spleen, thymus, skeletal muscle, fetal kidney and brain.,
Background	The Drosophila segment polarity gene lin encodes a protein, lines, which plays important roles in development of the epidermis and hindgut. This gene encodes a protein containing a lines-like domain. This gene is located on chromosome 15 and clustered with the gene encoding ankyrin repeat and SOCS box-containing protein 7. [provided by RefSeq, Sep 2010],

Nanjing BYabscience technology Co.,Ltd



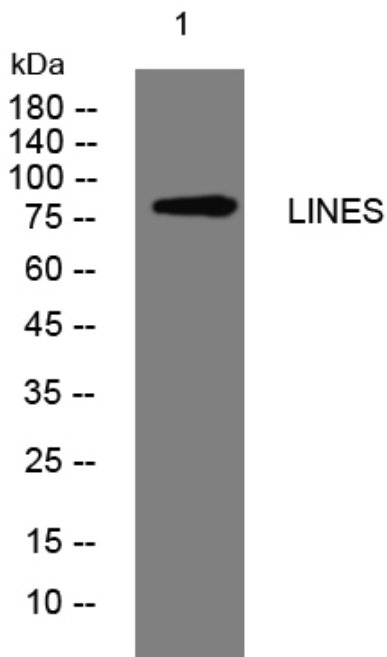
matters needing attention

Avoid repeated freezing and thawing!

Usage suggestions

This product can be used in immunological reaction related experiments. For more information, please consult technical personnel.

Products Images



Nanjing BYabscience technology Co.,Ltd