



IFIX rabbit pAb

Catalog No	BYab-08377
Isotype	IgG
Reactivity	Human; Mouse
Applications	WB
Gene Name	PYHIN1 IFIX
Protein Name	IFIX
Immunogen	Synthesized peptide derived from human IFIX AA range: 338-388
Specificity	This antibody detects endogenous levels of IFIX at Human/Mouse
Formulation	Liquid in PBS containing 50% glycerol, 0.5% BSA and 0.02% sodium azide.
Source	Polyclonal, Rabbit,IgG
Purification	The antibody was affinity-purified from rabbit serum by affinity-chromatography using specific immunogen.
Dilution	WB 1: 500-2000
Concentration	1 mg/ml
Purity	≥90%
Storage Stability	-20°C/1 year
Synonyms	
Observed Band	
Cell Pathway	[Isoform 1]: Nucleus, nucleoplasm.; [Isoform 3]: Nucleus, nucleoplasm.; [Isoform 5]: Nucleus. Nucleus speckle.
Tissue Specificity	Expressed in spleen, lymph node and peripheral blood leukocytes, and at lower levels in thymus, bone marrow and fetal liver. Down-regulated in breast tumors.
Function	domain:The HIN-200 domain mediates interaction with MDM2.,function:Major mediator of the tumor suppressor activity of IFN in breast cancer cells. Promotes ubiquitination and subsequent degradation of MDM2, which leads to p53/TP53 stabilization. Promotes ubiquitination and subsequent degradation of HDAC1, which in turn enhances maspin expression, and impairs invasive activity of cancer cells.,induction:By IFNalpha and IFNgamma in hematopoietic cancer cells.,similarity:Belongs to the HIN-200 family.,similarity:Contains 1 DAPIN domain.,similarity:Contains 1 HIN-200 domain.,subunit:Interacts with MDM2.,tissue specificity:Expressed in spleen, lymph node and peripheral blood leukocytes, and at lower levels in thymus, bone marrow and fetal liver. Down-regulated in breast tumors.,

Nanjing BYabscience technology Co.,Ltd



Background

The protein encoded by this gene belongs to the HIN-200 family of interferon-inducible proteins that share a 200-amino acid signature motif at their C-termini. HIN200 proteins are primarily nuclear and are involved in transcriptional regulation of genes important for cell cycle control, differentiation, and apoptosis. Downregulation of this gene is associated with breast cancer. This protein acts as a tumor suppressor by promoting ubiquitination and subsequent degradation of MDM2, which leads to stabilization of p53/TP53. Alternatively spliced transcript variants encoding different isoforms have been described for this gene. [provided by RefSeq, Aug 2011],

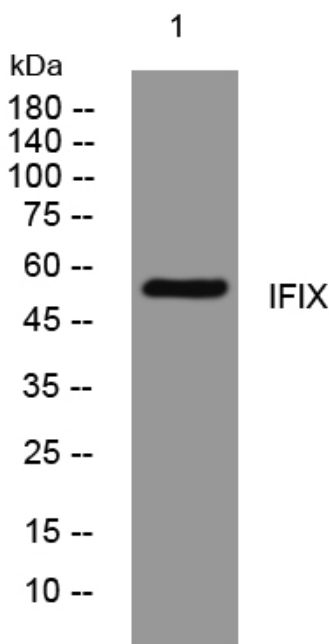
matters needing attention

Avoid repeated freezing and thawing!

Usage suggestions

This product can be used in immunological reaction related experiments. For more information, please consult technical personnel.

Products Images



Western blot analysis of lysates from 293T cells, primary antibody was diluted at 1:1000, 4° over night