



HBG1 rabbit pAb

Catalog No	BYab-08349
Isotype	IgG
Reactivity	Human;Rat;Mouse;
Applications	WB
Gene Name	HBG1 PRO2979
Protein Name	HBG1
Immunogen	Synthesized peptide derived from human HBG1 AA range: 34-84
Specificity	This antibody detects endogenous levels of HBG1 at Human
Formulation	Liquid in PBS containing 50% glycerol, 0.5% BSA and 0.02% sodium azide.
Source	Polyclonal, Rabbit,IgG
Purification	The antibody was affinity-purified from rabbit serum by affinity-chromatography using specific immunogen.
Dilution	WB 1: 500-2000
Concentration	1 mg/ml
Purity	≥90%
Storage Stability	-20°C/1 year
Synonyms	
Observed Band	
Cell Pathway	cytosol,hemoglobin complex,
Tissue Specificity	Red blood cells.
Function	developmental stage:Expressed until four or five weeks after birth.,disease:Some gamma variants can cause severe jaundice and cyanosis in premature and new born babies.,function:Gamma chains make up the fetal hemoglobin F, in combination with alpha chains.,online information:Human hemoglobin variants and thalassemias,PTM:Acetylation of Gly-2 converts Hb F to the minor Hb F1.,similarity:Belongs to the globin family.,subunit:Heterotetramer of two alpha chains and two gamma chains in fetal hemoglobin (Hb F). In the case of deletions affecting one or more of the alpha chains the excess gamma chains form homotetramers that exhibit neither Bohr effect nor heme-heme cooperativity (hemoglobin Bart's).,tissue specificity:Red blood cells.,

Nanjing BYabscience technology Co.,Ltd



Background

The gamma globin genes (HBG1 and HBG2) are normally expressed in the fetal liver, spleen and bone marrow. Two gamma chains together with two alpha chains constitute fetal hemoglobin (HbF) which is normally replaced by adult hemoglobin (HbA) at birth. In some beta-thalassemias and related conditions, gamma chain production continues into adulthood. The two types of gamma chains differ at residue 136 where glycine is found in the G-gamma product (HBG2) and alanine is found in the A-gamma product (HBG1). The former is predominant at birth. The order of the genes in the beta-globin cluster is: 5'ε-gamma-G-gamma-A-delta-beta-3' [provided by RefSeq, Jul 2008],

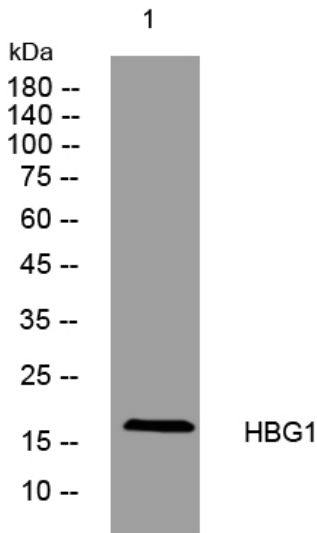
matters needing attention

Avoid repeated freezing and thawing!

Usage suggestions

This product can be used in immunological reaction related experiments. For more information, please consult technical personnel.

Products Images



Western blot analysis of lysates from A431 cells, primary antibody was diluted at 1:1000, 4° over night