



MAT2B rabbit pAb

Catalog No	BYab-08344
Isotype	IgG
Reactivity	Human; Mouse;Rat
Applications	WB
Gene Name	MAT2B TGR MSTP045 Nbla02999 UNQ2435/PRO4995
Protein Name	MAT2B
Immunogen	Synthesized peptide derived from human MAT2B AA range: 23-73
Specificity	This antibody detects endogenous levels of MAT2B at Human/Mouse/Rat
Formulation	Liquid in PBS containing 50% glycerol, 0.5% BSA and 0.02% sodium azide.
Source	Polyclonal, Rabbit,IgG
Purification	The antibody was affinity-purified from rabbit serum by affinity-chromatography using specific immunogen.
Dilution	WB 1: 500-2000
Concentration	1 mg/ml
Purity	≥90%
Storage Stability	-20°C/1 year
Synonyms	
Observed Band	
Cell Pathway	intracellular,nucleus,mitochondrion,cytosol,methionine adenosyltransferase complex,extracellular exosome,
Tissue Specificity	Widely expressed.
Function	function:Non-catalytic regulatory subunit of S-adenosylmethionine synthetase 2 (MAT2A), an enzyme that catalyzes the formation of S-adenosylmethionine from methionine and ATP. Regulates the activity of S-adenosylmethionine synthetase 2 by changing its kinetic properties, rendering the enzyme more susceptible to S-adenosylmethionine inhibition.,miscellaneous:Its expression in hepatoma cell lines may lead to increase DNA synthesis and thereby participate to cell proliferation.,pathway:Amino-acid biosynthesis; S-adenosyl-L-methionine biosynthesis; S-adenosyl-L-methionine from L-methionine: step 1/1.,similarity:Belongs to the dTDP-4-dehydrorhamnose reductase family. MAT2B subfamily.,subunit:Heterotetramer composed of 2 catalytic alpha subunits (alpha and alpha') (MAT2A) and 1 copy of beta subunit (MAT2B).,tissue specificity:Widely expressed.,

Nanjing BYabscience technology Co.,Ltd



Background

The protein encoded by this gene belongs to the methionine adenosyltransferase (MAT) family. MAT catalyzes the biosynthesis of S-adenosylmethionine from methionine and ATP. This protein is the regulatory beta subunit of MAT. Alternative splicing results in multiple transcript variants encoding different isoforms. [provided by RefSeq, Nov 2012],

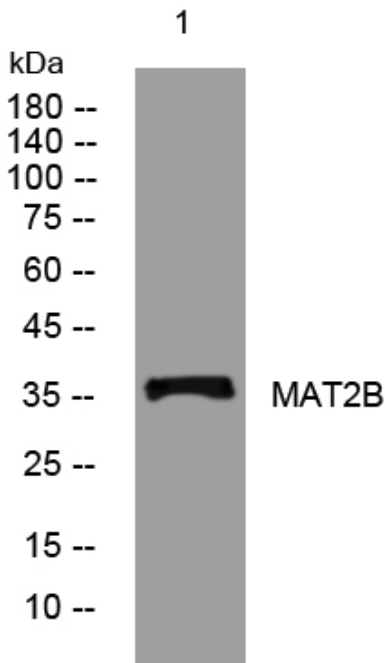
matters needing attention

Avoid repeated freezing and thawing!

Usage suggestions

This product can be used in immunological reaction related experiments. For more information, please consult technical personnel.

Products Images



Western blot analysis of lysates from DU145 cells, primary antibody was diluted at 1:1000, 4° over night