



AHSP rabbit pAb

Catalog No	BYab-08336
Isotype	IgG
Reactivity	Human; Mouse
Applications	IHC;IF
Gene Name	AHSP EDRF ERAF
Protein Name	AHSP
Immunogen	Synthesized peptide derived from human AHSP AA range: 1-51
Specificity	This antibody detects endogenous levels of AHSP at Human/Mouse
Formulation	Liquid in PBS containing 50% glycerol, 0.5% BSA and 0.02% sodium azide.
Source	Polyclonal, Rabbit,IgG
Purification	The antibody was affinity-purified from rabbit serum by affinity-chromatography using specific immunogen.
Dilution	IHC-p 1: 50-200. IF 1:50-200
Concentration	1 mg/ml
Purity	≥90%
Storage Stability	-20°C/1 year
Synonyms	
Observed Band	
Cell Pathway	Cytoplasm .
Tissue Specificity	Expressed in blood and bone marrow.
Function	function:Act as a chaperone to prevent the harmful aggregation of alpha-hemoglobin during normal erythroid cell development. Specifically protects free alpha-hemoglobin from precipitation. It is predicted to modulate pathological states of alpha-hemoglobin excess such as beta-thalassemia.,induction:By GATA-1 during erythroid maturation.,similarity:Belongs to the AHSP family.,subunit:Monomer. Forms an heterodimer with free alpha-hemoglobin. Does not bind beta-hemoglobin nor alpha(2)beta(2) hemoglobin A.,tissue specificity:Expressed in blood and bone marrow.,
Background	This gene encodes a molecular chaperone which binds specifically to free alpha-globin and is involved in hemoglobin assembly. The encoded protein binds to monomeric alpha-globin until it has been transferred to beta-globin to form a

Nanjing BYabscience technology Co.,Ltd



heterodimer, which in turn binds to another heterodimer to form the stable tetrameric hemoglobin. Alternative splicing results in multiple transcript variants. [provided by RefSeq, Dec 2015],

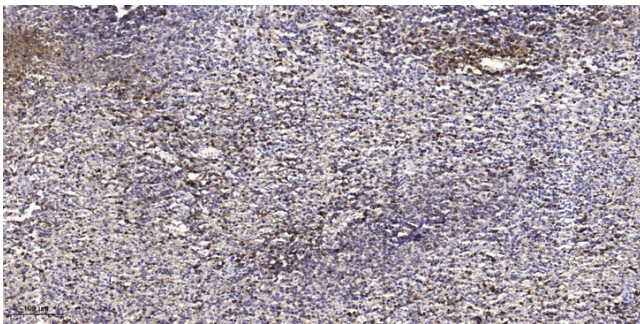
matters needing attention

Avoid repeated freezing and thawing!

Usage suggestions

This product can be used in immunological reaction related experiments. For more information, please consult technical personnel.

Products Images



Immunohistochemical analysis of paraffin-embedded human spleen tissue. 1,primary Antibody was diluted at 1:200(4° overnight). 2, Sodium citrate pH 6.0 was used for antigen retrieval(>98°C,20min). 3,Secondary antibody was diluted at 1:200