



DYH12 rabbit pAb

Catalog No	BYab-08335
Isotype	IgG
Reactivity	Human; Mouse;Rat
Applications	IHC;IF
Gene Name	DNAH12 DHC3 DLP12 DNAH12L DNAH7L DNAHC3 DNHD2 HDHC3 HL19
Protein Name	DYH12
Immunogen	Synthesized peptide derived from human DYH12 AA range: 565-615
Specificity	This antibody detects endogenous levels of DYH12 at Human/Mouse/Rat
Formulation	Liquid in PBS containing 50% glycerol, 0.5% BSA and 0.02% sodium azide.
Source	Polyclonal, Rabbit,IgG
Purification	The antibody was affinity-purified from rabbit serum by affinity-chromatography using specific immunogen.
Dilution	IHC-p 1: 50-200. IF 1:50-200
Concentration	1 mg/ml
Purity	≥90%
Storage Stability	-20°C/1 year
Synonyms	
Observed Band	
Cell Pathway	Cytoplasm, cytoskeleton, cilium axoneme .
Tissue Specificity	
Function	caution:Although related to the dynein heavy chain family, it is much shorter than the other members of the family and lacks essential conserved regions. Its function as dynein heavy chain is therefore unsure.,caution:Was originally derived from a readthrough transcript including ASB14 and DNAH12. DNHD2 was thought to be a distinct gene.,domain:Dynein heavy chains probably consist of an N-terminal stem (which binds cargo and interacts with other dynein components), and the head or motor domain. The motor contains six tandemly-linked AAA domains in the head, which form a ring. A stalk-like structure (formed by two of the coiled coil domains) protrudes between AAA 4 and AAA 5 and terminates in a microtubule-binding site. A seventh domain may also contribute to this ring; it is not clear whether the N-terminus or the C-terminus forms this extra domain. There are four well-conserved and two

Nanjing BYabscience technology Co.,Ltd



Background

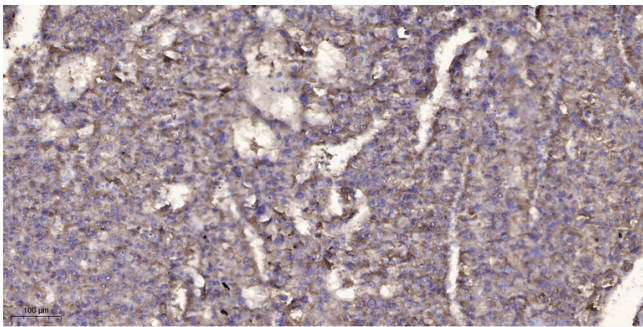
matters needing attention

Avoid repeated freezing and thawing!

Usage suggestions

This product can be used in immunological reaction related experiments. For more information, please consult technical personnel.

Products Images



Immunohistochemical analysis of paraffin-embedded human liver cancer. 1, Antibody was diluted at 1:200(4° overnight). 2, Tris-EDTA,pH9.0 was used for antigen retrieval. 3,Secondary antibody was diluted at 1:200(room temperature, 45min).