



TRIM2 rabbit pAb

Catalog No	BYab-08323
Isotype	IgG
Reactivity	Human; Mouse;Rat
Applications	WB
Gene Name	TRIM2 KIAA0517 RNF86
Protein Name	TRIM2
Immunogen	Synthesized peptide derived from human TRIM2 AA range: 162-212
Specificity	This antibody detects endogenous levels of TRIM2 at Human/Mouse/Rat
Formulation	Liquid in PBS containing 50% glycerol, 0.5% BSA and 0.02% sodium azide.
Source	Polyclonal, Rabbit,IgG
Purification	The antibody was affinity-purified from rabbit serum by affinity-chromatography using specific immunogen.
Dilution	WB 1: 500-2000
Concentration	1 mg/ml
Purity	≥90%
Storage Stability	-20°C/1 year
Synonyms	
Observed Band	
Cell Pathway	Cytoplasm .
Tissue Specificity	
Function	domain:The interaction with myosin V is dependent upon its NHL repeats, which form a beta-propeller (NHL) domain containing six blades.,function:May contribute to the alteration of neural cellular mechanisms.,similarity:Belongs to the TRIM/RBCC family.,similarity:Contains 1 B box-type zinc finger.,similarity:Contains 1 filamin repeat.,similarity:Contains 1 RING-type zinc finger.,similarity:Contains 6 NHL repeats.,subunit:Interacts with myosin V.,
Background	The protein encoded by this gene is a member of the tripartite motif (TRIM) family. The TRIM motif includes three zinc-binding domains, a RING, a B-box type 1 and a B-box type 2, and a coiled-coil region. The protein localizes to cytoplasmic filaments. It plays a neuroprotective role and functions as an E3-ubiquitin ligase in proteasome-mediated degradation of target proteins. Mutations in this gene can

Nanjing BYabscience technology Co.,Ltd



cause early-onset axonal neuropathy. Alternative splicing results in multiple transcript variants. [provided by RefSeq, Nov 2014],

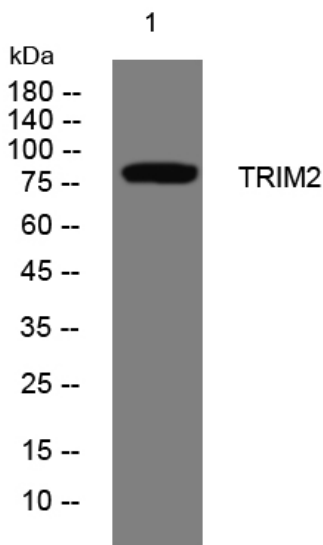
matters needing attention

Avoid repeated freezing and thawing!

Usage suggestions

This product can be used in immunological reaction related experiments. For more information, please consult technical personnel.

Products Images



Western blot analysis of lysates from MCF-7 cells, primary antibody was diluted at 1:1000, 4° over night