



YN3474

GPX7 rabbit pAb

Catalog No	BYab-08317
Isotype	IgG
Reactivity	Human; Mouse
Applications	WB
Gene Name	GPX7 GPX6 UNQ469/PRO828
Protein Name	GPX7
Immunogen	Synthesized peptide derived from human GPX7 AA range: 77-127
Specificity	This antibody detects endogenous levels of GPX7 at Human/Mouse
Formulation	Liquid in PBS containing 50% glycerol, 0.5% BSA and 0.02% sodium azide.
Source	Polyclonal, Rabbit,IgG
Purification	The antibody was affinity-purified from rabbit serum by affinity-chromatography using specific immunogen.
Dilution	WB 1: 500-2000
Concentration	1 mg/ml
Purity	≥90%
Storage Stability	-20°C/1 year
Synonyms	
Observed Band	
Cell Pathway	Secreted .
Tissue Specificity	Expressed in esophageal epithelial cells; expression is up-regulated after exposure to acidic bile acids.
Function	catalytic activity:2 glutathione + H(2)O(2) = glutathione disulfide + 2 H(2)O.,sequence caution:Wrong choice of frame.,similarity:Belongs to the glutathione peroxidase family.,
Background	

Nanjing BYabscience technology Co.,Ltd

网址: www.njbybio.com

官方热线: 025-5229-8998

监督电话: 15950492658



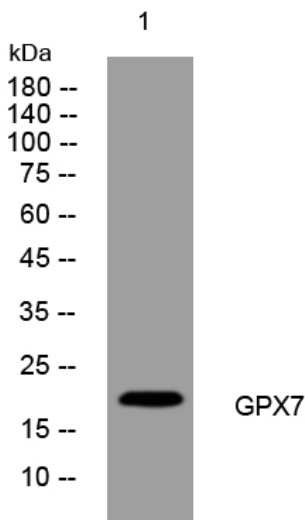
matters needing attention

Avoid repeated freezing and thawing!

Usage suggestions

This product can be used in immunological reaction related experiments. For more information, please consult technical personnel.

Products Images



Western blot analysis of lysates from U2OS cells, primary antibody was diluted at 1:1000, 4° over night