



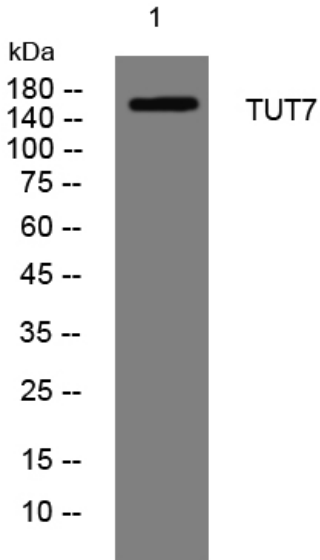
TUT7 rabbit pAb

Catalog No	BYab-08314
Isotype	IgG
Reactivity	Human; Mouse
Applications	WB
Gene Name	ZCCHC6 HS2 KIAA1711 TUT7
Protein Name	TUT7
Immunogen	Synthesized peptide derived from human TUT7 AA range: 3-53
Specificity	This antibody detects endogenous levels of TUT7 at Human/Mouse
Formulation	Liquid in PBS containing 50% glycerol, 0.5% BSA and 0.02% sodium azide.
Source	Polyclonal, Rabbit,IgG
Purification	The antibody was affinity-purified from rabbit serum by affinity-chromatography using specific immunogen.
Dilution	WB 1: 500-2000
Concentration	1 mg/ml
Purity	≥90%
Storage Stability	-20°C/1 year
Synonyms	
Observed Band	
Cell Pathway	Cytoplasm . Expression is pancytoplasmic in contrast with TUT4 expression which is enriched in cytoplasmic ribonucleoprotein granules. .
Tissue Specificity	
Function	
Background	
matters needing attention	Avoid repeated freezing and thawing!
Usage suggestions	This product can be used in immunological reaction related experiments. For more information, please consult technical personnel.

Nanjing BYabscience technology Co.,Ltd



Products Images



Western blot analysis of lysates from HpeG2 cells,
primary antibody was diluted at 1:1000, 4° over night