



YN3467

## TMTC2 rabbit pAb

<b>Catalog No</b>	BYab-08310
<b>Isotype</b>	IgG
<b>Reactivity</b>	Human; Mouse
<b>Applications</b>	WB
<b>Gene Name</b>	TMTC2
<b>Protein Name</b>	TMTC2
<b>Immunogen</b>	Synthesized peptide derived from human TMTC2 AA range: 184-234
<b>Specificity</b>	This antibody detects endogenous levels of TMTC2 at Human/Mouse
<b>Formulation</b>	Liquid in PBS containing 50% glycerol, 0.5% BSA and 0.02% sodium azide.
<b>Source</b>	Polyclonal, Rabbit,IgG
<b>Purification</b>	The antibody was affinity-purified from rabbit serum by affinity-chromatography using specific immunogen.
<b>Dilution</b>	WB 1: 500-2000
<b>Concentration</b>	1 mg/ml
<b>Purity</b>	≥90%
<b>Storage Stability</b>	-20°C/1 year
<b>Synonyms</b>	
<b>Observed Band</b>	
<b>Cell Pathway</b>	Membrane ; Multi-pass membrane protein . Endoplasmic reticulum .
<b>Tissue Specificity</b>	
<b>Function</b>	similarity:Belongs to the TMTC family.,similarity:Contains 10 TPR repeats.,
<b>Background</b>	The protein encoded by this gene is an integral membrane protein localized to the endoplasmic reticulum (ER). The encoded protein contains many tetratricopeptide repeats, sequences known for being involved in protein-protein interactions. This protein binds both the calcium uptake pump SERCA2B and the carbohydrate-binding chaperone calnexin, and it appears to play a role in calcium

Nanjing BYabscience technology Co.,Ltd



homeostasis in the ER. Multiple transcript variants encoding different isoforms have been found for this gene. [provided by RefSeq, Feb 2016],

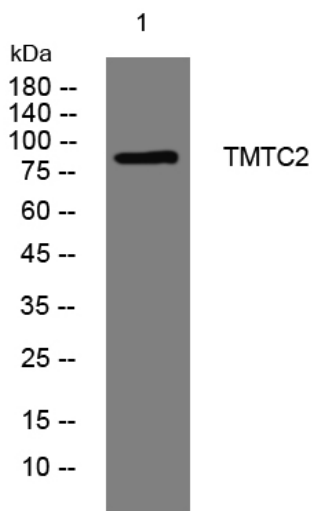
**matters needing attention**

Avoid repeated freezing and thawing!

**Usage suggestions**

This product can be used in immunological reaction related experiments. For more information, please consult technical personnel.

## Products Images



Western blot analysis of lysates from THP-1 cells, primary antibody was diluted at 1:1000, 4° over night