



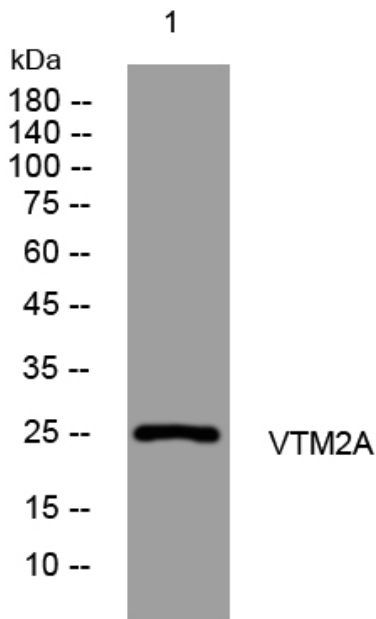
VTM2A rabbit pAb

Catalog No	BYab-08302
Isotype	IgG
Reactivity	Human; Mouse
Applications	WB
Gene Name	VSTM2A VSTM2
Protein Name	VTM2A
Immunogen	Synthesized peptide derived from human VTM2A AA range: 148-198
Specificity	This antibody detects endogenous levels of VTM2A at Human/Mouse
Formulation	Liquid in PBS containing 50% glycerol, 0.5% BSA and 0.02% sodium azide.
Source	Polyclonal, Rabbit,IgG
Purification	The antibody was affinity-purified from rabbit serum by affinity-chromatography using specific immunogen.
Dilution	WB 1: 500-2000
Concentration	1 mg/ml
Purity	≥90%
Storage Stability	-20°C/1 year
Synonyms	
Observed Band	
Cell Pathway	Secreted . Secreted by adipose precursor cells (By similarity). Not detected in the nucleus (PubMed:28052263). .
Tissue Specificity	
Function	similarity:Contains 1 Ig-like V-type (immunoglobulin-like) domain.,
Background	
matters needing attention	Avoid repeated freezing and thawing!
Usage suggestions	This product can be used in immunological reaction related experiments. For more information, please consult technical personnel.

Nanjing BYabscience technology Co.,Ltd



Products Images



Western blot analysis of lysates from HpeG2 cells,
primary antibody was diluted at 1:1000, 4° over night