



IF122 rabbit pAb

Catalog No	BYab-08301
Isotype	IgG
Reactivity	Human; Mouse
Applications	WB
Gene Name	IFT122 SPG WDR10 WDR140
Protein Name	IF122
Immunogen	Synthesized peptide derived from human IF122 AA range: 956-1006
Specificity	This antibody detects endogenous levels of IF122 at Human/Mouse
Formulation	Liquid in PBS containing 50% glycerol, 0.5% BSA and 0.02% sodium azide.
Source	Polyclonal, Rabbit,IgG
Purification	The antibody was affinity-purified from rabbit serum by affinity-chromatography using specific immunogen.
Dilution	WB 1: 500-2000
Concentration	1 mg/ml
Purity	≥90%
Storage Stability	-20°C/1 year
Synonyms	
Observed Band	
Cell Pathway	Cell projection, cilium . Cytoplasm, cytoskeleton, cilium basal body . Localizes to photoreceptor connecting cilia. .
Tissue Specificity	Expressed in many tissues. Predominant expression in testis and pituitary.
Function	similarity:Contains 7 WD repeats.,tissue specificity:Expressed in many tissues. Predominant expression in testis and pituitary.,
Background	This gene encodes a member of the WD repeat protein family. WD repeats are minimally conserved regions of approximately 40 amino acids typically bracketed by gly-his and trp-asn (GH-WD), which may facilitate formation of heterotrimeric or multiprotein complexes. Members of this family are involved in a variety of cellular processes, including cell cycle progression, signal transduction, apoptosis, and gene regulation. This cytoplasmic protein contains seven WD repeats and an AF-2 domain which function by recruiting coregulatory molecules and in transcriptional activation. Mutations in this gene cause cranioectodermal dysplasia-1. A related pseudogene is located on chromosome 3. Alternative

Nanjing BYabscience technology Co.,Ltd



splicing results in multiple transcript variants encoding different isoforms. [provided by RefSeq, Jul 2013],

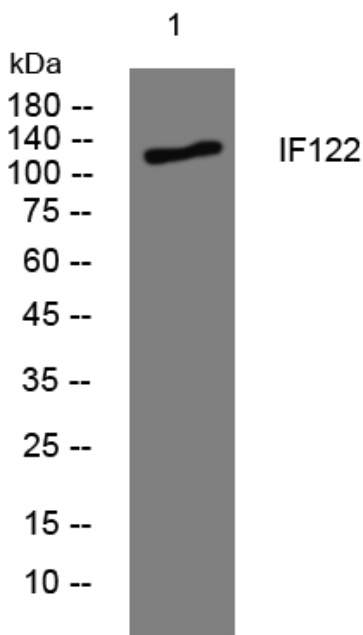
matters needing attention

Avoid repeated freezing and thawing!

Usage suggestions

This product can be used in immunological reaction related experiments. For more information, please consult technical personnel.

Products Images



Western blot analysis of lysates from MCF-7 cells, primary antibody was diluted at 1:1000, 4° over night