



WASH1 rabbit pAb

Catalog No	BYab-08299
Isotype	IgG
Reactivity	Human; Mouse;Rat
Applications	WB
Gene Name	WASH1 FAM39E
Protein Name	WASH1
Immunogen	Synthesized peptide derived from human WASH1 AA range: 163-213
Specificity	This antibody detects endogenous levels of WASH1 at Human/Mouse/Rat
Formulation	Liquid in PBS containing 50% glycerol, 0.5% BSA and 0.02% sodium azide.
Source	Polyclonal, Rabbit,IgG
Purification	The antibody was affinity-purified from rabbit serum by affinity-chromatography using specific immunogen.
Dilution	WB 1: 500-2000
Concentration	1 mg/ml
Purity	≥90%
Storage Stability	-20°C/1 year
Synonyms	
Observed Band	
Cell Pathway	Early endosome membrane . Recycling endosome membrane . Late endosome . Cytoplasmic vesicle, autophagosome . Cytoplasm, cytoskeleton, microtubule organizing center, centrosome, centriole . Localization to the endosome membrane is mediated via its interaction with WASHC2 (PubMed:19922874). Localizes to MMP14-positive late endosomes and transiently to invadopodia (PubMed:24344185). Localized to Salmonella typhimurium entry sites (By similarity). .
Tissue Specificity	
Function	miscellaneous:The telomeric region of chromosome 9p is paralogous to the pericentromeric regions of chromosome 9 as well as to 2q. Paralogous regions contain 7 transcriptional units, including CXYorf1. Duplicated CXYorf1 genes are also present in the Xq/Yq pseudoautosomal region, as well as on chromosome 1 and 15. The chromosome 16 copy seems to be a pseudogene.,similarity:Belongs to the FAM39 family.,similarity:Contains 1 WH2 domain.,

Nanjing BYabscience technology Co.,Ltd



Background

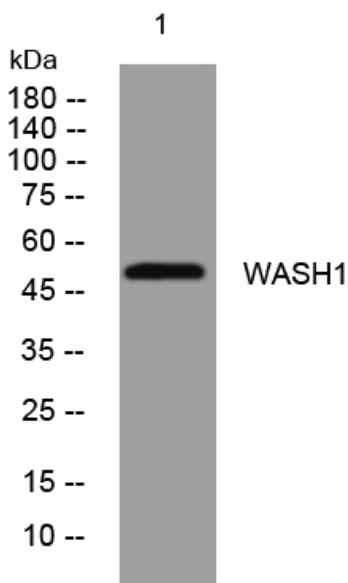
matters needing attention

Avoid repeated freezing and thawing!

Usage suggestions

This product can be used in immunological reaction related experiments. For more information, please consult technical personnel.

Products Images



Western blot analysis of lysates from U2OS cells, primary antibody was diluted at 1:1000, 4° over night