



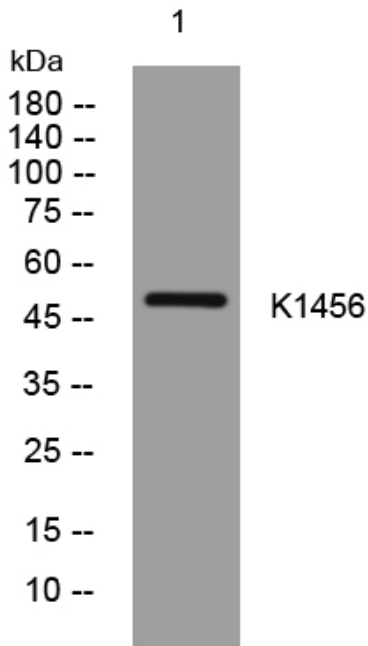
K1456 rabbit pAb

Catalog No	BYab-08284
Isotype	IgG
Reactivity	Human; Mouse
Applications	WB
Gene Name	KIAA1456 C8orf79
Protein Name	K1456
Immunogen	Synthesized peptide derived from human K1456 AA range: 140-190
Specificity	This antibody detects endogenous levels of K1456 at Human/Mouse
Formulation	Liquid in PBS containing 50% glycerol, 0.5% BSA and 0.02% sodium azide.
Source	Polyclonal, Rabbit,IgG
Purification	The antibody was affinity-purified from rabbit serum by affinity-chromatography using specific immunogen.
Dilution	WB 1: 500-2000
Concentration	1 mg/ml
Purity	≥90%
Storage Stability	-20°C/1 year
Synonyms	
Observed Band	
Cell Pathway	nucleus,cytoplasm,
Tissue Specificity	Down-regulated in breast, bladder, colorectal, cervix and testicular carcinomas.
Function	similarity:Belongs to the methyltransferase superfamily.,
Background	
matters needing attention	Avoid repeated freezing and thawing!
Usage suggestions	This product can be used in immunological reaction related experiments. For more information, please consult technical personnel.

Nanjing BYabscience technology Co.,Ltd



Products Images



Western blot analysis of lysates from MCF-7 cells,
primary antibody was diluted at 1:1000, 4° over night