



# WDFY2 rabbit pAb

<b>Catalog No</b>	BYab-08265
<b>Isotype</b>	IgG
<b>Reactivity</b>	Human; Mouse
<b>Applications</b>	WB
<b>Gene Name</b>	WDFY2 WDF2 ZFYVE22
<b>Protein Name</b>	WDFY2
<b>Immunogen</b>	Synthesized peptide derived from human WDFY2 AA range: 344-394
<b>Specificity</b>	This antibody detects endogenous levels of WDFY2 at Human/Mouse
<b>Formulation</b>	Liquid in PBS containing 50% glycerol, 0.5% BSA and 0.02% sodium azide.
<b>Source</b>	Polyclonal, Rabbit,IgG
<b>Purification</b>	The antibody was affinity-purified from rabbit serum by affinity-chromatography using specific immunogen.
<b>Dilution</b>	WB 1: 500-2000
<b>Concentration</b>	1 mg/ml
<b>Purity</b>	≥90%
<b>Storage Stability</b>	-20°C/1 year
<b>Synonyms</b>	
<b>Observed Band</b>	
<b>Cell Pathway</b>	Endosome . Early endosome . Cytoplasm . Localizes to intracellular vesicles (PubMed:16792529). Colocalizes with VAMP2 and PRKCZ in intracellular vesicles (PubMed:17313651). Colocalizes with AKT2 in early endosomes (By similarity). .
<b>Tissue Specificity</b>	
<b>Function</b>	similarity:Contains 1 FYVE-type zinc finger.,similarity:Contains 7 WD repeats.,
<b>Background</b>	This gene encodes a protein that contains two WD domains and an FYVE zinc finger region. The function of this gene is unknown. An alternatively spliced transcript variant of this gene may exist. [provided by RefSeq, Jul 2008],
<b>matters needing attention</b>	Avoid repeated freezing and thawing!

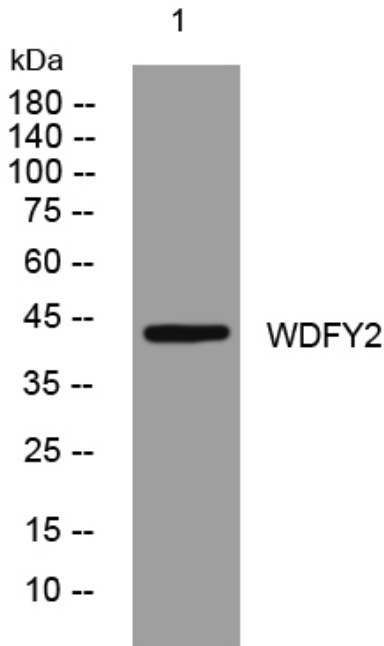
Nanjing BYabscience technology Co.,Ltd



**Usage suggestions**

This product can be used in immunological reaction related experiments. For more information, please consult technical personnel.

**Products Images**



Western blot analysis of lysates from HeLa cells, primary antibody was diluted at 1:1000, 4° over night