



MLEC rabbit pAb

Catalog No	BYab-08261
Isotype	IgG
Reactivity	Human; Mouse;Rat
Applications	WB
Gene Name	MLEC KIAA0152
Protein Name	MLEC
Immunogen	Synthesized peptide derived from human MLEC AA range: 165-215
Specificity	This antibody detects endogenous levels of MLEC at Human/Mouse/Rat
Formulation	Liquid in PBS containing 50% glycerol, 0.5% BSA and 0.02% sodium azide.
Source	Polyclonal, Rabbit,IgG
Purification	The antibody was affinity-purified from rabbit serum by affinity-chromatography using specific immunogen.
Dilution	WB 1: 500-2000
Concentration	1 mg/ml
Purity	≥90%
Storage Stability	-20°C/1 year
Synonyms	
Observed Band	
Cell Pathway	Endoplasmic reticulum membrane ; Single-pass type I membrane protein .
Tissue Specificity	
Function	function:Carbohydrate-binding protein with a strong ligand preference for Glc2-N-glycan. May play a role in the early steps of protein N-glycosylation.,similarity:Belongs to the malectin family.,
Background	This gene encodes the carbohydrate-binding protein malectin which is a Type I membrane-anchored endoplasmic reticulum protein. This protein has an affinity for Glc2Man9GlcNAc2 (G2M9) N-glycans and is involved in regulating glycosylation in the endoplasmic reticulum. This protein has also been shown to interact with ribophorin I and may be involved in the directing the degradation of misfolded proteins. Alternate splicing results in multiple transcript variants. [provided by RefSeq, Jan 2015],

Nanjing BYabscience technology Co.,Ltd



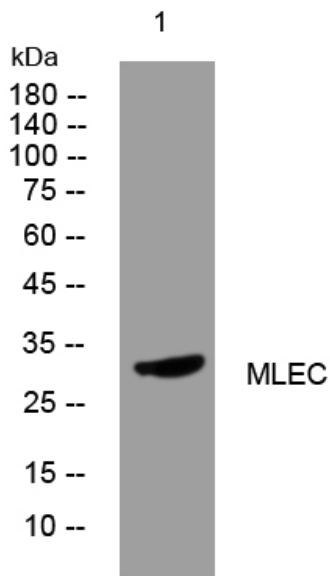
matters needing attention

Avoid repeated freezing and thawing!

Usage suggestions

This product can be used in immunological reaction related experiments. For more information, please consult technical personnel.

Products Images



Western blot analysis of lysates from HpeG2 cells, primary antibody was diluted at 1:1000, 4° over night