



ADH4 rabbit pAb

Catalog No	BYab-08255
Isotype	IgG
Reactivity	Human; Mouse;Rat
Applications	WB
Gene Name	ADH4
Protein Name	ADH4
Immunogen	Synthesized peptide derived from human ADH4 AA range: 6-56
Specificity	This antibody detects endogenous levels of ADH4 at Human/Mouse/Rat
Formulation	Liquid in PBS containing 50% glycerol, 0.5% BSA and 0.02% sodium azide.
Source	Polyclonal, Rabbit,IgG
Purification	The antibody was affinity-purified from rabbit serum by affinity-chromatography using specific immunogen.
Dilution	WB 1: 500-2000
Concentration	1 mg/ml
Purity	≥90%
Storage Stability	-20°C/1 year
Synonyms	
Observed Band	
Cell Pathway	Cytoplasm.
Tissue Specificity	
Function	catalytic activity:An alcohol + NAD(+) = an aldehyde or ketone + NADH.,cofactor:Binds 2 zinc ions per subunit.,miscellaneous:There are 7 different ADH's isozymes in human: three belongs to class-I: alpha, beta, and gamma, one to class-II: pi, one to class-III: chi, one to class-IV: ADH7 and one to class-V: ADH6.,similarity:Belongs to the zinc-containing alcohol dehydrogenase family. Class-II subfamily.,subunit:Homodimer.,
Background	This gene encodes class II alcohol dehydrogenase 4 pi subunit, which is a member of the alcohol dehydrogenase family. Members of this enzyme family metabolize a wide variety of substrates, including ethanol, retinol, other aliphatic alcohols, hydroxysteroids, and lipid peroxidation products. Class II alcohol dehydrogenase is a homodimer composed of 2 pi subunits. It exhibits a high

Nanjing BYabscience technology Co.,Ltd



activity for oxidation of long-chain aliphatic alcohols and aromatic alcohols and is less sensitive to pyrazole. This gene is localized to chromosome 4 in the cluster of alcohol dehydrogenase genes. [provided by RefSeq, Jul 2008],

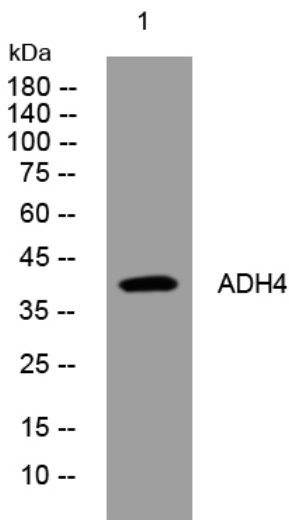
matters needing attention

Avoid repeated freezing and thawing!

Usage suggestions

This product can be used in immunological reaction related experiments. For more information, please consult technical personnel.

Products Images



Western blot analysis of lysates from VEC cells, primary antibody was diluted at 1:1000, 4° over night