



TRI50 rabbit pAb

Catalog No	BYab-08254
Isotype	IgG
Reactivity	Human; Mouse;Rat
Applications	WB
Gene Name	TRIM50 TRIM50A
Protein Name	TRI50
Immunogen	Synthesized peptide derived from human TRI50 AA range: 312-362
Specificity	This antibody detects endogenous levels of TRI50 at Human/Mouse/Rat
Formulation	Liquid in PBS containing 50% glycerol, 0.5% BSA and 0.02% sodium azide.
Source	Polyclonal, Rabbit,IgG
Purification	The antibody was affinity-purified from rabbit serum by affinity-chromatography using specific immunogen.
Dilution	WB 1: 500-2000
Concentration	1 mg/ml
Purity	≥90%
Storage Stability	-20°C/1 year
Synonyms	
Observed Band	
Cell Pathway	Cytoplasm . Localizes mainly into discrete cytoplasmic punctuate structures heterogeneous in size and shape containing polyubiquitinated proteins. .
Tissue Specificity	
Function	function:E3 ubiquitin-protein ligase.,PTM:Auto-ubiquitinated.,similarity:Belongs to the TRIM/RBCC family.,similarity:Contains 1 B box-type zinc finger.,similarity:Contains 1 B30.2/SPRY domain.,similarity:Contains 1 RING-type zinc finger.,subunit:Can form dimers and trimers. Interacts with several E2 ubiquitin-conjugating enzymes, including UBE2L6, UBE2E1, UBE2E3. No interaction with UBE2H.,
Background	
matters needing attention	Avoid repeated freezing and thawing!

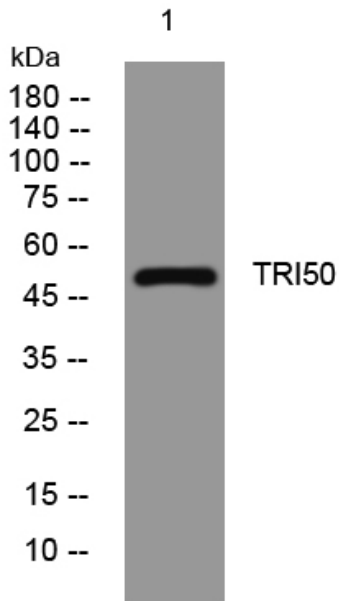
Nanjing BYabscience technology Co.,Ltd



Usage suggestions

This product can be used in immunological reaction related experiments. For more information, please consult technical personnel.

Products Images



Western blot analysis of lysates from 293T cells, primary antibody was diluted at 1:1000, 4° over night