



PACE1 rabbit pAb

Catalog No	BYab-08248
Isotype	IgG
Reactivity	Human; Mouse
Applications	WB
Gene Name	SCYL3 PACE1
Protein Name	PACE1
Immunogen	Synthesized peptide derived from human PACE1 AA range: 519-569
Specificity	This antibody detects endogenous levels of PACE1 at Human/Mouse
Formulation	Liquid in PBS containing 50% glycerol, 0.5% BSA and 0.02% sodium azide.
Source	Polyclonal, Rabbit,IgG
Purification	The antibody was affinity-purified from rabbit serum by affinity-chromatography using specific immunogen.
Dilution	WB 1: 500-2000
Concentration	1 mg/ml
Purity	≥90%
Storage Stability	-20°C/1 year
Synonyms	
Observed Band	
Cell Pathway	Cytoplasm . Golgi apparatus . Cell projection, lamellipodium . Colocalized with EZR/VIL2, actin and CD44 in lamellipodia.
Tissue Specificity	Ubiquitously expressed.
Function	domain:The protein kinase domain is predicted to be catalytically inactive.,function:May play a role in regulating cell adhesion/migration complexes in migrating cells.,PTM:May be myristoylated; myristoylation may target it to Golgi compartment.,PTM:Phosphorylated.,similarity:Belongs to the protein kinase superfamily.,similarity:Contains 1 protein kinase domain.,similarity:Contains 4 HEAT repeats.,subcellular location:Colocalized with EZR/VIL2, actin and CD44 in lamellipodia.,subunit:Interacts with EZR/VIL2 C-terminal domain.,tissue specificity:Ubiquitously expressed.,
Background	This gene encodes a protein with a kinase domain and four HEAT repeats. The encoded protein interacts with the C-terminal domain of ezrin, an ERM protein, and may play a role in cell adhesion and migration. Alternative splicing results in

Nanjing BYabscience technology Co.,Ltd



multiple transcript variants encoding multiple isoforms. [provided by RefSeq, Jun 2012],

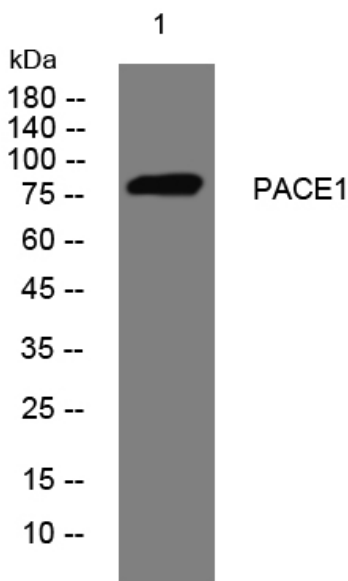
matters needing attention

Avoid repeated freezing and thawing!

Usage suggestions

This product can be used in immunological reaction related experiments. For more information, please consult technical personnel.

Products Images



Western blot analysis of lysates from SW480 cells, primary antibody was diluted at 1:1000, 4° over night