



ASIC5 rabbit pAb

Catalog No	BYab-08247
Isotype	IgG
Reactivity	Human; Mouse;Rat
Applications	WB
Gene Name	ASIC5 ACCN5 HINAC
Protein Name	ASIC5
Immunogen	Synthesized peptide derived from human ASIC5 AA range: 412-462
Specificity	This antibody detects endogenous levels of ASIC5 at Human/Mouse/Rat
Formulation	Liquid in PBS containing 50% glycerol, 0.5% BSA and 0.02% sodium azide.
Source	Polyclonal, Rabbit,IgG
Purification	The antibody was affinity-purified from rabbit serum by affinity-chromatography using specific immunogen.
Dilution	WB 1: 500-2000
Concentration	1 mg/ml
Purity	≥90%
Storage Stability	-20°C/1 year
Synonyms	
Observed Band	
Cell Pathway	Cell membrane ; Multi-pass membrane protein .
Tissue Specificity	Detected in small intestine, duodenum and jejunum. Detected at very low levels in testis and rectum.
Function	function:Cation channel that gives rise to very low constitutive currents in the absence of activation. The activated channel exhibits selectivity for sodium, and is inhibited by amiloride.,similarity:Belongs to the amiloride-sensitive sodium channel family.,subunit:Homotetramer or heterotetramer.,tissue specificity:Detected in small intestine, duodenum and jejunum. Detected at very low levels in testis and rectum.,
Background	This gene belongs to the amiloride-sensitive Na ⁺ channel and degenerin (NaC/DEG) family, members of which have been identified in many animal species ranging from the nematode to human. The amiloride-sensitive Na ⁺ channel encoded by this gene is primarily expressed in the small intestine, however, its exact function is not known. [provided by RefSeq, Jul 2008],

Nanjing BYabscience technology Co.,Ltd



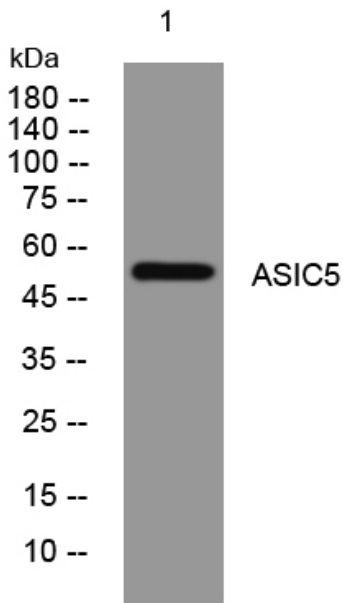
matters needing attention

Avoid repeated freezing and thawing!

Usage suggestions

This product can be used in immunological reaction related experiments. For more information, please consult technical personnel.

Products Images



Western blot analysis of lysates from MCF-7 cells, primary antibody was diluted at 1:1000, 4° over night