



GCC1 rabbit pAb

Catalog No	BYab-08246
Isotype	IgG
Reactivity	Human; Mouse
Applications	WB
Gene Name	GCC1
Protein Name	GCC1
Immunogen	Synthesized peptide derived from human GCC1 AA range: 632-682
Specificity	This antibody detects endogenous levels of GCC1 at Human/Mouse
Formulation	Liquid in PBS containing 50% glycerol, 0.5% BSA and 0.361% sodium azide.
Source	Polyclonal, Rabbit,IgG
Purification	The antibody was affinity-purified from rabbit serum by affinity-chromatography using specific immunogen.
Dilution	WB 1:500-2000
Concentration	1 mg/ml
Purity	≥90%
Storage Stability	-20°C/1 year
Synonyms	GRIP and coiled-coil domain-containing protein 1 (Golgi coiled-coil protein 1)
Observed Band	85kD
Cell Pathway	Cytoplasm . Golgi apparatus membrane ; Peripheral membrane protein .
Tissue Specificity	Brain,Cervix carcinoma,Hepatoma,Skin,Uterus,
Function	domain:Extended rod-like protein with coiled-coil domains.,function:Probably involved in maintaining Golgi structure.,sequence caution:Wrong choice of frame.,similarity:Contains 1 GRIP domain.,
Background	The protein encoded by this gene is a peripheral membrane protein. It is sensitive to brefeldin A. This encoded protein contains a GRIP domain which is thought to be used in targeting. It may play a role in the organization of trans-Golgi network subcompartment involved with membrane transport. [provided by RefSeq, Jul 2008],
matters needing attention	Avoid repeated freezing and thawing!

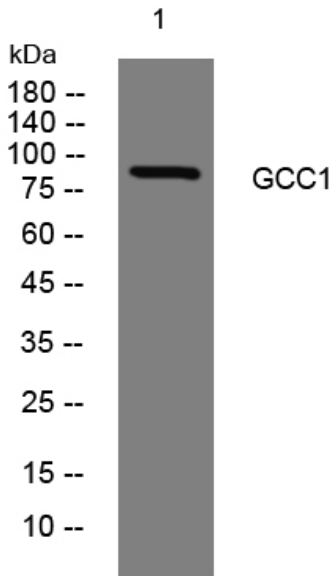
Nanjing BYabscience technology Co.,Ltd



Usage suggestions

This product can be used in immunological reaction related experiments. For more information, please consult technical personnel.

Products Images



Western blot analysis of lysates from HCT116 cells, primary antibody was diluted at 1:1000, 4° over night