



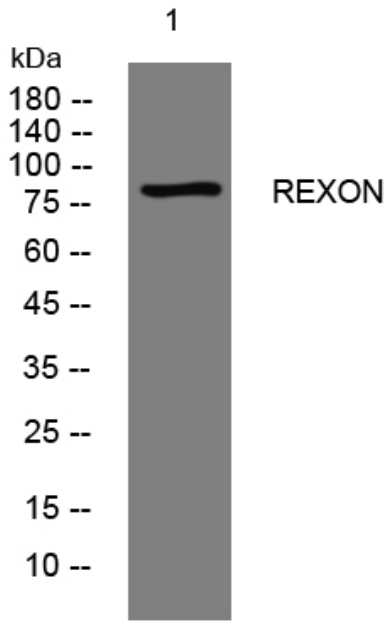
REXON rabbit pAb

Catalog No	BYab-08242
Isotype	IgG
Reactivity	Human;Rat
Applications	WB
Gene Name	44M2.3
Protein Name	REXON
Immunogen	Synthesized peptide derived from human REXON AA range: 582-632
Specificity	This antibody detects endogenous levels of REXON at Human/Rat
Formulation	Liquid in PBS containing 50% glycerol, 0.5% BSA and 0.357% sodium azide.
Source	Polyclonal, Rabbit,IgG
Purification	The antibody was affinity-purified from rabbit serum by affinity-chromatography using specific immunogen.
Dilution	WB 1:500-2000
Concentration	1 mg/ml
Purity	≥90%
Storage Stability	-20°C/1 year
Synonyms	Putative RNA exonuclease NEF-sp (EC 3.1.-.-)
Observed Band	85kD
Cell Pathway	nucleolus,extracellular exosome,
Tissue Specificity	Lung,Testis,
Function	similarity:Contains 1 exonuclease domain.,similarity:Contains 2 RRM (RNA recognition motif) domains.,
Background	
matters needing attention	Avoid repeated freezing and thawing!
Usage suggestions	This product can be used in immunological reaction related experiments. For more information, please consult technical personnel.

Nanjing BYabscience technology Co.,Ltd



Products Images



Western blot analysis of lysates from HpeG2 cells,
primary antibody was diluted at 1:1000, 4° over night