



YMEL1 rabbit pAb

Catalog No	BYab-08238
Isotype	IgG
Reactivity	Human; Mouse;Rat
Applications	WB
Gene Name	YME1L1 FTSH1 YME1L UNQ1868/PRO4304
Protein Name	YMEL1
Immunogen	Synthesized peptide derived from human YMEL1 AA range: 136-186
Specificity	This antibody detects endogenous levels of YMEL1 at Human/Mouse/Rat
Formulation	Liquid in PBS containing 50% glycerol, 0.5% BSA and 0.353% sodium azide.
Source	Polyclonal, Rabbit,IgG
Purification	The antibody was affinity-purified from rabbit serum by affinity-chromatography using specific immunogen.
Dilution	WB 1:500-2000
Concentration	1 mg/ml
Purity	≥90%
Storage Stability	-20°C/1 year
Synonyms	ATP-dependent zinc metalloprotease YME1L1 (EC 3.4.24.-) (ATP-dependent metalloprotease FtsH1) (Meg-4) (Presenilin-associated metalloprotease) (PAMP) (YME1-like protein 1)
Observed Band	85kD
Cell Pathway	Mitochondrion inner membrane . Mitochondrion .
Tissue Specificity	High expression in cardiac and skeletal muscle mitochondria.
Function	cofactor: Binds 1 zinc ion per subunit .,function: Putative ATP-dependent protease which plays a role in mitochondrial protein metabolism.,similarity: In the C-terminal section; belongs to the peptidase M41 family.,similarity: In the N-terminal section; belongs to the AAA ATPase family.,
Background	The protein encoded by this gene is the human ortholog of yeast mitochondrial AAA metalloprotease, Yme1p. It is localized in the mitochondria and can functionally complement a yme1 disruptant yeast strain. It is proposed that this gene plays a role in mitochondrial protein metabolism and could be involved in mitochondrial pathologies. Three transcript variants encoding different isoforms

Nanjing BYabscience technology Co.,Ltd



have been found for this gene. [provided by RefSeq, Dec 2011],

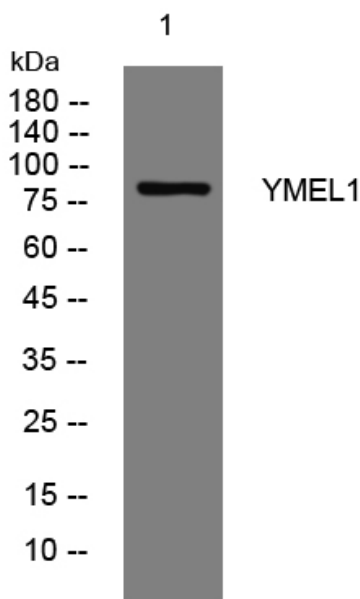
matters needing attention

Avoid repeated freezing and thawing!

Usage suggestions

This product can be used in immunological reaction related experiments. For more information, please consult technical personnel.

Products Images



Western blot analysis of lysates from A549 cells, primary antibody was diluted at 1:1000, 4° over night