



PASD1 rabbit pAb

Catalog No	BYab-08237
Isotype	IgG
Reactivity	Human;Rat;Mouse;
Applications	WB
Gene Name	PASD1
Protein Name	PASD1
Immunogen	Synthesized peptide derived from human PASD1 AA range: 710-760
Specificity	This antibody detects endogenous levels of PASD1 at Human
Formulation	Liquid in PBS containing 50% glycerol, 0.5% BSA and 0.352% sodium azide.
Source	Polyclonal, Rabbit,IgG
Purification	The antibody was affinity-purified from rabbit serum by affinity-chromatography using specific immunogen.
Dilution	WB 1:500-2000
Concentration	1 mg/ml
Purity	≥90%
Storage Stability	-20°C/1 year
Synonyms	PAS domain-containing protein 1 (Cancer/testis antigen 63) (CT63) (OX-TES-1)
Observed Band	85kD
Cell Pathway	[Isoform 1]: Nucleus . Associates preferentially at the periphery of the nucleus with heterochromatin (PubMed:25936801). . ; [Isoform 2]: Nucleus . Associates preferentially at the periphery of the nucleus with heterochromatin (PubMed:25936801). .
Tissue Specificity	Testis-specific (PubMed:25936801). Expressed in a broad range of cancer cells, including melanoma, lung cancer, and breast cancer (at protein level). Testis-specific (PubMed:15162151). Found in histologically normal tissues from patients with uterus, lung and small intestine cancers. Widespread expression seen in solid tumors and diffuse large B-cell lymphoma (DLBCL)-derived cell lines. Isoform 2 is expressed in all DLBCL-derived cell lines, while isoform 1 is preferentially expressed in cell lines derived from non-germinal center DLBCL (PubMed:15162151).
Function	function:May function as a transcription factor.,similarity:Contains 1 PAS (PER-ARNT-SIM) domain.,tissue specificity:Testis-specific. Found in histologically normal tissues from patients with uterus, lung and small intestine

Nanjing BYabscience technology Co.,Ltd



cancers. Widespread expression seen in solid tumors and diffuse large B-cell lymphoma (DLBCL)-derived cell lines. Isoform 2 is expressed in all DLBCL-derived cell lines, while isoform 1 is preferentially expressed in cell lines derived from non-germinal center DLBCL.,

Background

This gene encodes a protein that is thought to function as a transcription factor. The protein is a cancer-associated antigen that can stimulate autologous T-cell responses, and it is therefore considered to be a potential immunotherapeutic target for the treatment of various hematopoietic malignancies, including diffuse large B-cell lymphoma. [provided by RefSeq, May 2010],

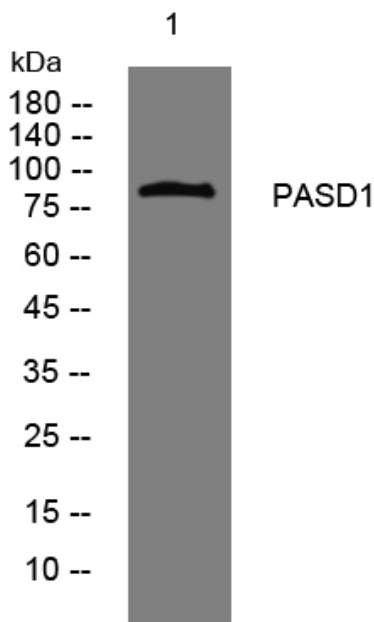
matters needing attention

Avoid repeated freezing and thawing!

Usage suggestions

This product can be used in immunological reaction related experiments. For more information, please consult technical personnel.

Products Images



Western blot analysis of lysates from PC-12 cells, primary antibody was diluted at 1:1000, 4° over night