



CMIP rabbit pAb

Catalog No	BYab-08230
Isotype	IgG
Reactivity	Human; Mouse
Applications	WB
Gene Name	CMIP KIAA1694 TCMIP
Protein Name	CMIP
Immunogen	Synthesized peptide derived from human CMIP AA range: 105-155
Specificity	This antibody detects endogenous levels of CMIP at Human/Mouse
Formulation	Liquid in PBS containing 50% glycerol, 0.5% BSA and 0.345% sodium azide.
Source	Polyclonal, Rabbit,IgG
Purification	The antibody was affinity-purified from rabbit serum by affinity-chromatography using specific immunogen.
Dilution	WB 1:500-2000
Concentration	1 mg/ml
Purity	≥90%
Storage Stability	-20°C/1 year
Synonyms	C-Maf-inducing protein (c-Mip) (Truncated c-Maf-inducing protein) (Tc-Mip)
Observed Band	85kD
Cell Pathway	Nucleus . Cytoplasm . Isoform 2 is translocated to the nucleus and is specifically recruited during minimal change nephrotic syndrome (MCNS) (PubMed:12939343) (PubMed:15616553). Detected in nuclear and cytoplasmic compartments during MCNS relapse (PubMed:12939343) (PubMed:15616553). Expressed in cytoplasm only during MCNS remission and absent in normal patients (PubMed:12939343) .
Tissue Specificity	Isoform 1 is expressed in peripheral blood mononuclear cells and kidney. Lower expression in brain and liver. Expression is down-regulated in activated cells. Isoform 2 is expressed in lymphocyte precursors, however, expression shuts down during maturation and differentiation in thymus and fetal liver.
Function	developmental stage:Expressed in fetal liver.,disease:Isoform 2 expression is up-regulated in MCNS.,function:Plays a role in T-cell signaling pathway. Isoform 2 may play a role in T-helper 2 (Th2) signaling pathway and seems to represent the first proximal signaling protein that links T-cell receptor-mediated signal to the activation of c-Maf Th2 specific factor.,similarity:Contains 1 PH

Nanjing BYabscience technology Co.,Ltd



domain.,subcellular location:Isoform 2 is translocated to the nucleus and is specifically recruited during minimal change nephrotic syndrome (MCNS). Detected in nuclear and cytoplasmic compartments during MCNS relapse. Expressed in cytoplasm only during MCNS remission and absent in normal patients.,subunit:Interacts with FLNA.,tissue specificity:Isoform 1 is expressed in peripheral blood mononuclear cells and kidney. Lower expression in brain and liver. Expression is down-regulated in activated cells. Is

Background

This gene encodes a c-Maf inducing protein that plays a role in T-cell signaling pathway. Alternatively spliced transcript variants encoding different isoforms have been described for this gene. [provided by RefSeq, Aug 2011],

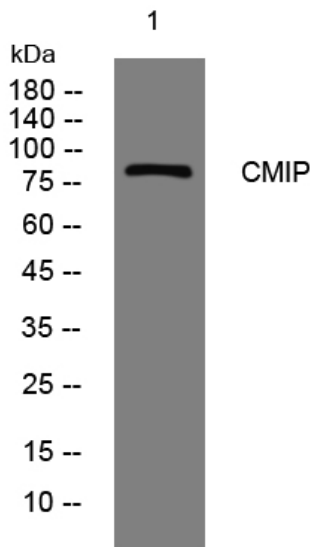
matters needing attention

Avoid repeated freezing and thawing!

Usage suggestions

This product can be used in immunological reaction related experiments. For more information, please consult technical personnel.

Products Images



Western blot analysis of lysates from VEC cells, primary antibody was diluted at 1:1000, 4° over night