



## TLE3 rabbit pAb

<b>Catalog No</b>	BYab-08228
<b>Isotype</b>	IgG
<b>Reactivity</b>	Human; Mouse;Rat
<b>Applications</b>	WB
<b>Gene Name</b>	TLE3 KIAA1547
<b>Protein Name</b>	TLE3
<b>Immunogen</b>	Synthesized peptide derived from human TLE3 AA range: 257-307
<b>Specificity</b>	This antibody detects endogenous levels of TLE3 at Human/Mouse/Rat
<b>Formulation</b>	Liquid in PBS containing 50% glycerol, 0.5% BSA and 0.343% sodium azide.
<b>Source</b>	Polyclonal, Rabbit,IgG
<b>Purification</b>	The antibody was affinity-purified from rabbit serum by affinity-chromatography using specific immunogen.
<b>Dilution</b>	WB 1:500-2000
<b>Concentration</b>	1 mg/ml
<b>Purity</b>	≥90%
<b>Storage Stability</b>	-20°C/1 year
<b>Synonyms</b>	Transducin-like enhancer protein 3 (Enhancer of split groucho-like protein 3) (ESG3)
<b>Observed Band</b>	85kD
<b>Cell Pathway</b>	Nucleus.
<b>Tissue Specificity</b>	Placenta and lung.
<b>Function</b>	alternative products:Experimental confirmation may be lacking for some isoforms,function:Transcriptional corepressor that binds to a number of transcription factors. Inhibits the transcriptional activation mediated by CTNNB1 and TCF family members in Wnt signaling. The effects of full-length TLE family members may be modulated by association with dominant-negative AES.,similarity:Belongs to the WD repeat Groucho/TLE family.,similarity:Contains 7 WD repeats.,subunit:Homooligomer and heterooligomer with other family members. Binds LEF1, TCF7, TCF7L1 and TCF7L2 (By similarity). Binds FOXA2.,tissue specificity:Placenta and lung.,

Nanjing BYabscience technology Co.,Ltd



### Background

This gene encodes a transcriptional co-repressor protein that belongs to the transducin-like enhancer family of proteins. The members of this family function in the Notch signaling pathway that regulates determination of cell fate during development. Expression of this gene has been associated with a favorable outcome to chemotherapy with taxanes for ovarian carcinoma. Alternate splicing results in multiple transcript variants. Additional alternatively spliced transcript variants of this gene have been described, but their full-length nature is not known. [provided by RefSeq, Sep 2013],

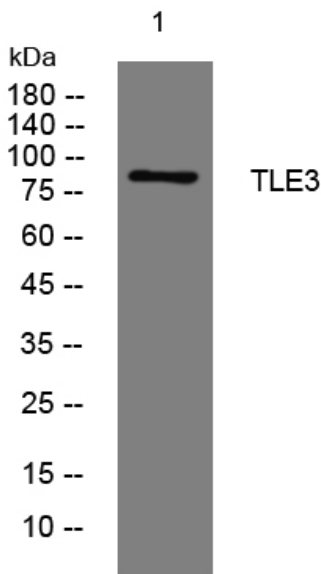
### matters needing attention

Avoid repeated freezing and thawing!

### Usage suggestions

This product can be used in immunological reaction related experiments. For more information, please consult technical personnel.

## Products Images



Western blot analysis of lysates from THP-1 cells, primary antibody was diluted at 1:1000, 4° over night