



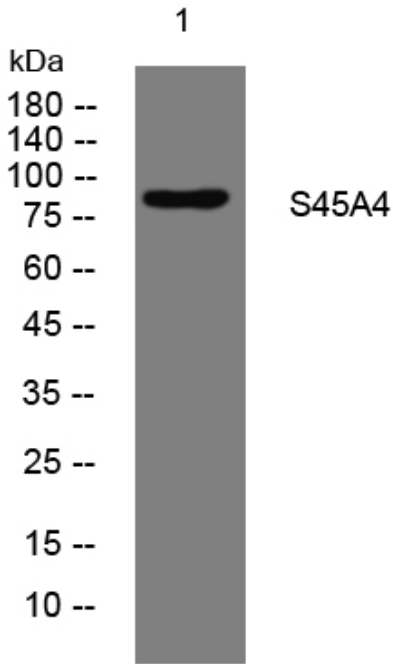
S45A4 rabbit pAb

| | |
|----------------------------------|---|
| Catalog No | BYab-08211 |
| Isotype | IgG |
| Reactivity | Human; Mouse |
| Applications | WB |
| Gene Name | SLC45A4 KIAA1126 |
| Protein Name | S45A4 |
| Immunogen | Synthesized peptide derived from human S45A4 AA range: 60-110 |
| Specificity | This antibody detects endogenous levels of S45A4 at Human/Mouse |
| Formulation | Liquid in PBS containing 50% glycerol, 0.5% BSA and 0.326% sodium azide. |
| Source | Polyclonal, Rabbit,IgG |
| Purification | The antibody was affinity-purified from rabbit serum by affinity-chromatography using specific immunogen. |
| Dilution | WB 1:500-2000 |
| Concentration | 1 mg/ml |
| Purity | ≥90% |
| Storage Stability | -20°C/1 year |
| Synonyms | Solute carrier family 45 member 4 |
| Observed Band | 85kD |
| Cell Pathway | Membrane ; Multi-pass membrane protein . |
| Tissue Specificity | Brain,Pancreas,Testis, |
| Function | similarity:Belongs to the glycoside-pentoside-hexuronide (GPH) cation symporter transporter (TC 2.A.2) family., |
| Background | |
| matters needing attention | Avoid repeated freezing and thawing! |
| Usage suggestions | This product can be used in immunological reaction related experiments. For more information, please consult technical personnel. |

Nanjing BYabscience technology Co.,Ltd



Products Images



Western blot analysis of lysates from MCF-7 cells,
primary antibody was diluted at 1:1000, 4° over night