



AF1L1 rabbit pAb

Catalog No	BYab-08210
Isotype	IgG
Reactivity	Human; Mouse;Rat
Applications	WB
Gene Name	AFAP1L1
Protein Name	AF1L1
Immunogen	Synthesized peptide derived from human AF1L1 AA range: 180-230
Specificity	This antibody detects endogenous levels of AF1L1 at Human/Mouse/Rat
Formulation	Liquid in PBS containing 50% glycerol, 0.5% BSA and 0.325% sodium azide.
Source	Polyclonal, Rabbit,IgG
Purification	The antibody was affinity-purified from rabbit serum by affinity-chromatography using specific immunogen.
Dilution	WB 1:500-2000
Concentration	1 mg/ml
Purity	≥90%
Storage Stability	-20°C/1 year
Synonyms	Actin filament-associated protein 1-like 1 (AFAP1-like protein 1)
Observed Band	85kD
Cell Pathway	Cytoplasm . Cell projection, podosome . Cell projection, invadopodium . Cytoplasm, cytoskeleton, stress fiber .
Tissue Specificity	Expressed in breast, colon and brain. In all 3 tissues, expressed in the microvasculature (at protein level). In addition, in the breast, found in the contractile myoepithelial cell layer which surrounds the breast ducts (at protein level). In the colon, expressed in the mucous membrane and colonic crypts and in the smooth muscle cell layer which provide movement of the colon (at protein level). In the cerebellum, localized around the Purkinje neurons and the granule cells of the granular layer, but not inside cell bodies (at protein level). Outside of the cerebellar cortex, expressed in glial cells (at protein level). Highly expressed away from the cell bodies within the dentate nucleus (at protein level).
Function	PTM:Phosphorylated upon DNA damage, probably by ATM or ATR.,similarity:Contains 2 PH domains.,
Background	

Nanjing BYabscience technology Co.,Ltd



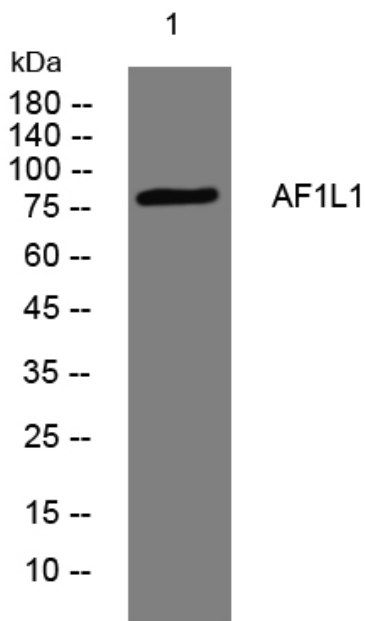
matters needing attention

Avoid repeated freezing and thawing!

Usage suggestions

This product can be used in immunological reaction related experiments. For more information, please consult technical personnel.

Products Images



Western blot analysis of lysates from HeLa cells, primary antibody was diluted at 1:1000, 4° over night

Nanjing BYabscience technology Co.,Ltd

网址: www.njbybio.com

官方热线: 025-5229-8998

监督电话: 15950492658