



DZI1L rabbit pAb

Catalog No	BYab-08204
Isotype	IgG
Reactivity	Human; Mouse;Rat
Applications	WB
Gene Name	DZIP1L
Protein Name	DZI1L
Immunogen	Synthesized peptide derived from human DZI1L AA range: 235-285
Specificity	This antibody detects endogenous levels of DZI1L at Human/Mouse/Rat
Formulation	Liquid in PBS containing 50% glycerol, 0.5% BSA and 0.319% sodium azide.
Source	Polyclonal, Rabbit,IgG
Purification	The antibody was affinity-purified from rabbit serum by affinity-chromatography using specific immunogen.
Dilution	WB 1:500-2000
Concentration	1 mg/ml
Purity	≥90%
Storage Stability	-20°C/1 year
Synonyms	Zinc finger protein DZIP1L (DAZ-interacting protein 1-like protein)
Observed Band	85kD
Cell Pathway	Cytoplasm, cytoskeleton, cilium basal body . Cytoplasm, cytoskeleton, microtubule organizing center, centrosome, centriole . Localizes to centrioles and to the distal ends of basal bodies (PubMed:28530676). .
Tissue Specificity	Brain,Testis,
Function	similarity:Belongs to the DZIP C2H2-type zinc-finger protein family.,similarity:Contains 1 C2H2-type zinc finger.,
Background	
matters needing attention	Avoid repeated freezing and thawing!

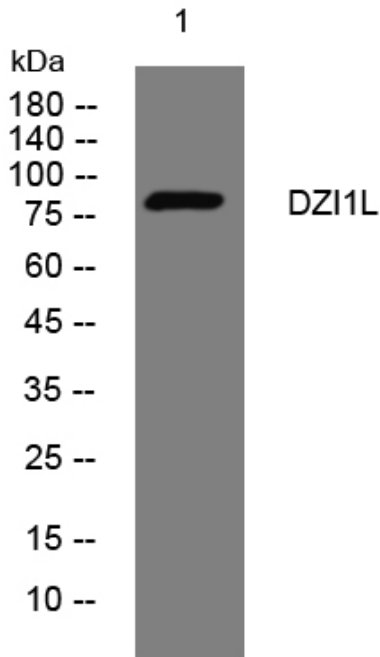
Nanjing BYabscience technology Co.,Ltd



Usage suggestions

This product can be used in immunological reaction related experiments. For more information, please consult technical personnel.

Products Images



Western blot analysis of lysates from AD293 cells, primary antibody was diluted at 1:1000, 4° over night