



# ZER1 rabbit pAb

<b>Catalog No</b>	BYab-08203
<b>Isotype</b>	IgG
<b>Reactivity</b>	Human; Mouse
<b>Applications</b>	WB
<b>Gene Name</b>	ZER1 C9orf60 ZYG ZYG11BL
<b>Protein Name</b>	ZER1
<b>Immunogen</b>	Synthesized peptide derived from human ZER1 AA range: 388-438
<b>Specificity</b>	This antibody detects endogenous levels of ZER1 at Human/Mouse
<b>Formulation</b>	Liquid in PBS containing 50% glycerol, 0.5% BSA and 0.318% sodium azide.
<b>Source</b>	Polyclonal, Rabbit,IgG
<b>Purification</b>	The antibody was affinity-purified from rabbit serum by affinity-chromatography using specific immunogen.
<b>Dilution</b>	WB 1:500-2000
<b>Concentration</b>	1 mg/ml
<b>Purity</b>	≥90%
<b>Storage Stability</b>	-20°C/1 year
<b>Synonyms</b>	Protein zer-1 homolog (Hzyg) (Zyg-11 homolog B-like protein)
<b>Observed Band</b>	85kD
<b>Cell Pathway</b>	Cul2-RING ubiquitin ligase complex,
<b>Tissue Specificity</b>	Expressed in testis, spermatocytes and spermatids (at protein level). Expressed in spermatocytes, spermatids, prostate, skeletal muscle, ovary, small intestine, heart, brain and pancreas.
<b>Function</b>	function:Probably acts as target recruitment subunit in the E3 ubiquitin ligase complex ZER1-CUL2-Elongin BC.,similarity:Belongs to the zyg-11 family.,similarity:Contains 3 LRR (leucine-rich) repeats.,similarity:Contains 5 ARM repeats.,subunit:Interacts with the TCEB1-TCEB2/Elongin BC complex. Part of an E3 ubiquitin ligase complex including ZER1, CUL2 and Elongin BC.,tissue specificity:Expressed in testis, spermatocytes and spermatides (at protein level). Expressed in spermatocytes, spermatides, prostate, skeletal muscle, ovary, small intestine, heart, brain and pancreas.,
<b>Background</b>	This gene encodes a subunit of an E3 ubiquitin ligase complex that may be involved in meiosis. The encoded protein contains three leucine-rich repeat

Nanjing BYabscience technology Co.,Ltd



motifs. [provided by RefSeq, Nov 2012],

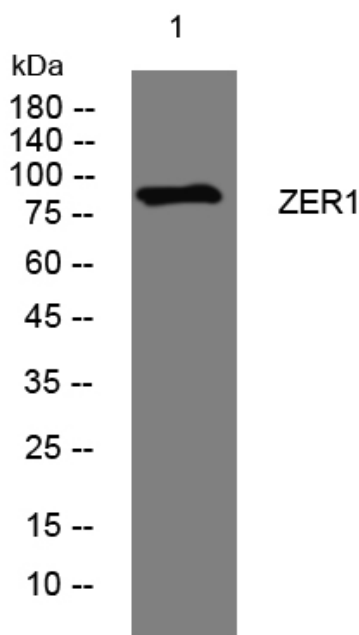
**matters needing attention**

Avoid repeated freezing and thawing!

**Usage suggestions**

This product can be used in immunological reaction related experiments. For more information, please consult technical personnel.

## Products Images



Western blot analysis of lysates from SH-SY5Y cells, primary antibody was diluted at 1:1000, 4° over night

Nanjing BYabscience technology Co.,Ltd