



SIM1 rabbit pAb

Catalog No	BYab-08201
Isotype	IgG
Reactivity	Human; Mouse
Applications	WB
Gene Name	SIM1 BHLHE14
Protein Name	SIM1
Immunogen	Synthesized peptide derived from human SIM1 AA range: 545-595
Specificity	This antibody detects endogenous levels of SIM1 at Human/Mouse
Formulation	Liquid in PBS containing 50% glycerol, 0.5% BSA and 0.316% sodium azide.
Source	Polyclonal, Rabbit,IgG
Purification	The antibody was affinity-purified from rabbit serum by affinity-chromatography using specific immunogen.
Dilution	WB 1:500-2000
Concentration	1 mg/ml
Purity	≥90%
Storage Stability	-20°C/1 year
Synonyms	Single-minded homolog 1 (Class E basic helix-loop-helix protein 14) (bHLHe14)
Observed Band	85kD
Cell Pathway	Nucleus .
Tissue Specificity	
Function	function:Transcriptional factor that may have pleiotropic effects during embryogenesis and in the adult.,similarity:Contains 1 basic helix-loop-helix (bHLH) domain.,similarity:Contains 1 PAC (PAS-associated C-terminal) domain.,similarity:Contains 1 Single-minded C-terminal domain.,similarity:Contains 2 PAS (PER-ARNT-SIM) domains.,subunit:Efficient DNA binding requires dimerization with another bHLH protein. Heterodimer of SIM1 and ARNT .,
Background	SIM1 and SIM2 genes are Drosophila single-minded (sim) gene homologs. SIM1 transcript was detected only in fetal kidney out of various adult and fetal tissues tested. Since the sim gene plays an important role in Drosophila development and has peak levels of expression during the period of

Nanjing BYabscience technology Co.,Ltd



neurogenesis, it was proposed that the human SIM gene is a candidate for involvement in certain dysmorphic features (particularly the facial and skull characteristics), abnormalities of brain development, and/or mental retardation of Down syndrome. [provided by RefSeq, Jul 2008],

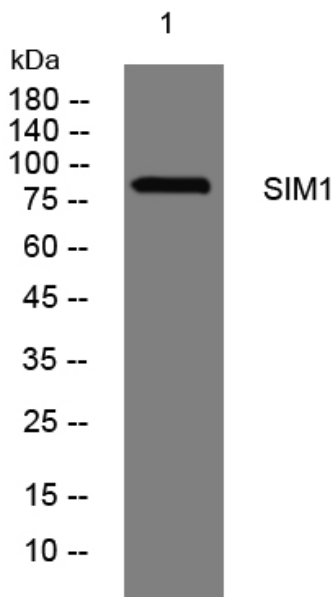
matters needing attention

Avoid repeated freezing and thawing!

Usage suggestions

This product can be used in immunological reaction related experiments. For more information, please consult technical personnel.

Products Images



Western blot analysis of lysates from A549 cells, primary antibody was diluted at 1:1000, 4° over night