



FAM5C rabbit pAb

Catalog No	BYab-08199
Isotype	IgG
Reactivity	Human; Mouse;Rat
Applications	WB
Gene Name	FAM5C DBCCR1L DBCCR1L1
Protein Name	FAM5C
Immunogen	Synthesized peptide derived from human FAM5C AA range: 503-553
Specificity	This antibody detects endogenous levels of FAM5C at Human/Mouse/Rat
Formulation	Liquid in PBS containing 50% glycerol, 0.5% BSA and 0.314% sodium azide.
Source	Polyclonal, Rabbit,IgG
Purification	The antibody was affinity-purified from rabbit serum by affinity-chromatography using specific immunogen.
Dilution	WB 1:500-2000
Concentration	1 mg/ml
Purity	≥90%
Storage Stability	-20°C/1 year
Synonyms	Protein FAM5C (DBCCR1-like protein 1)
Observed Band	85kD
Cell Pathway	Secreted . Mitochondrion .
Tissue Specificity	Strongly expressed in oral keratinocytes compared to the weak expression in tongue squamous cell carcinoma (SCC). Expressed in endothelial and aortic smooth muscle cells. Overexpressed in gonadotropinomas compared to normal pituitarie tissues.
Function	similarity:Belongs to the FAM5 family.,
Background	This gene is overexpressed in pituitary tumors but is underexpressed in tongue squamous cell carcinomas, ulcerative colitis, and peri-implantitis. Polymorphisms that increase expression of this gene have been shown to increase vascular inflammation, and an association of this gene with myocardial infarction has been demonstrated. Finally, hypermethylation of this gene may find usefulness as a biomarker for gastric cancer. Two transcript variants encoding different isoforms have been found for this gene. [provided by RefSeq, Nov 2015],

Nanjing BYabscience technology Co.,Ltd



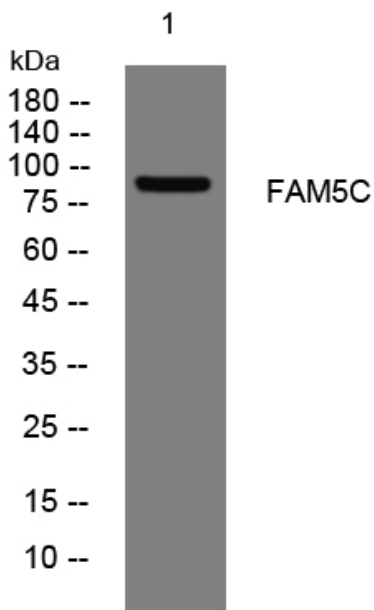
matters needing attention

Avoid repeated freezing and thawing!

Usage suggestions

This product can be used in immunological reaction related experiments. For more information, please consult technical personnel.

Products Images



Western blot analysis of lysates from U2OS cells, primary antibody was diluted at 1:1000, 4° over night