



ABCB9 rabbit pAb

Catalog No	BYab-08197
Isotype	IgG
Reactivity	Human; Mouse;Rat
Applications	WB
Gene Name	ABCB9 KIAA1520
Protein Name	ABCB9
Immunogen	Synthesized peptide derived from human ABCB9 AA range: 224-274
Specificity	This antibody detects endogenous levels of ABCB9 at Human/Mouse/Rat
Formulation	Liquid in PBS containing 50% glycerol, 0.5% BSA and 0.312% sodium azide.
Source	Polyclonal, Rabbit,IgG
Purification	The antibody was affinity-purified from rabbit serum by affinity-chromatography using specific immunogen.
Dilution	WB 1:500-2000
Concentration	1 mg/ml
Purity	≥90%
Storage Stability	-20°C/1 year
Synonyms	ATP-binding cassette sub-family B member 9 (ATP-binding cassette transporter 9) (ABC transporter 9 protein) (hABCB9) (TAP-like protein) (TAPL)
Observed Band	85kD
Cell Pathway	Lysosome membrane ; Multi-pass membrane protein . May be located in membrane rafts. Takes an intracellular route from the endoplasmic reticulum (ER), via Golgi and early endosomes to late endosomal and lysosomal compartments (PubMed:30877195). .
Tissue Specificity	Highly expressed in testis, and at moderate levels in brain, spinal cord, and thyroid. Not expressed in monocytes but strongly expressed during differentiation of monocytes to dendritic cells and macrophages.
Function	function:May function as a peptide transporter.,similarity:Belongs to the ABC transporter family.,similarity:Belongs to the ABC transporter family. MHC peptide exporter (TC 3.A.1.209) subfamily.,similarity:Contains 1 ABC transmembrane type-1 domain.,similarity:Contains 1 ABC transporter domain.,subunit:Homodimer or heterodimer .,tissue specificity:Highly expressed in testis, and at moderate levels in brain, spinal cord, and thyroid.,

Nanjing BYabscience technology Co.,Ltd



Background

The membrane-associated protein encoded by this gene is a member of the superfamily of ATP-binding cassette (ABC) transporters. ABC proteins transport various molecules across extra- and intra-cellular membranes. ABC genes are divided into seven distinct subfamilies (ABC1, MDR/TAP, MRP, ALD, OABP, GCN20, White). This protein is a member of the MDR/TAP subfamily. Members of the MDR/TAP subfamily are involved in multidrug resistance as well as antigen presentation. This family member functions in the translocation of peptides from the cytosol into the lysosomal lumen. Alternative splicing of this gene results in distinct isoforms which are likely to have different substrate specificities. [provided by RefSeq, Jul 2011],

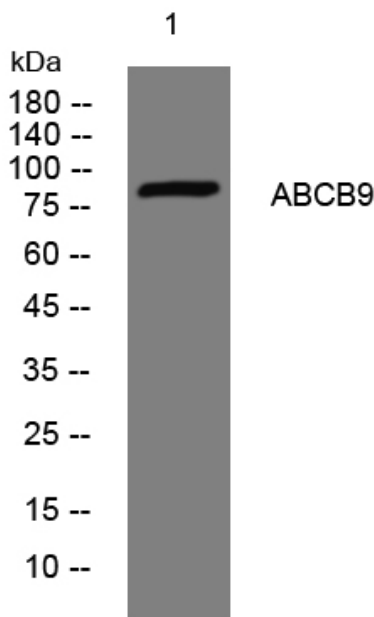
matters needing attention

Avoid repeated freezing and thawing!

Usage suggestions

This product can be used in immunological reaction related experiments. For more information, please consult technical personnel.

Products Images



Western blot analysis of lysates from KB cells, primary antibody was diluted at 1:1000, 4° over night