



ZDHC8 rabbit pAb

Catalog No	BYab-08195
Isotype	IgG
Reactivity	Human; Mouse
Applications	WB
Gene Name	ZDHHC8 KIAA1292 ZDHHCL1 ZNF378
Protein Name	ZDHC8
Immunogen	Synthesized peptide derived from human ZDHC8 AA range: 289-339
Specificity	This antibody detects endogenous levels of ZDHC8 at Human/Mouse
Formulation	Liquid in PBS containing 50% glycerol, 0.5% BSA and 0.310% sodium azide.
Source	Polyclonal, Rabbit,IgG
Purification	The antibody was affinity-purified from rabbit serum by affinity-chromatography using specific immunogen.
Dilution	WB 1:500-2000
Concentration	1 mg/ml
Purity	≥90%
Storage Stability	-20°C/1 year
Synonyms	Probable palmitoyltransferase ZDHHC8 (EC 2.3.1.-) (Zinc finger DHHC domain-containing protein 8) (DHHC-8) (Zinc finger protein 378)
Observed Band	85kD
Cell Pathway	Golgi apparatus membrane ; Multi-pass membrane protein . Mitochondrion membrane ; Multi-pass membrane protein .
Tissue Specificity	Widely expressed.
Function	catalytic activity:Palmitoyl-CoA + protein-cysteine = S-palmitoyl protein + CoA.,disease:According to PubMed:15489219 and PubMed:15184899, defects in ZDHHC8 may contribute to susceptibility to schizophrenia, but according to PubMed:15992527, PubMed:15631889 and PubMed:16150541, it is not the case.,domain:The DHHC domain is required for palmitoyltransferase activity.,function:Putative palmitoyltransferase involved in glutamatergic transmission.,similarity:Belongs to the DHHC palmitoyltransferase family. ERF2/ZDHHC9 subfamily.,similarity:Contains 1 DHHC-type zinc finger.,
Background	This gene encodes a four transmembrane protein that is a member of the zinc finger DHHC domain-containing protein family. The encoded protein may function

Nanjing BYabscience technology Co.,Ltd



as a palmitoyltransferase. Defects in this gene may be associated with a susceptibility to schizophrenia. Alternate splicing of this gene results in multiple transcript variants. A pseudogene of this gene is found on chromosome 22.[provided by RefSeq, May 2010],

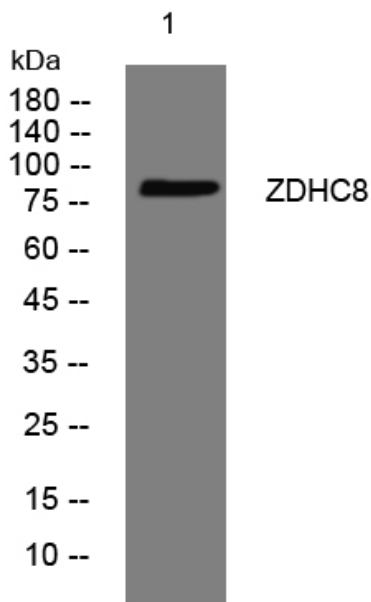
matters needing attention

Avoid repeated freezing and thawing!

Usage suggestions

This product can be used in immunological reaction related experiments. For more information, please consult technical personnel.

Products Images



Western blot analysis of lysates from A549 cells, primary antibody was diluted at 1:1000, 4° over night